

Contract No. DC/2022/02

Drainage Improvement Works at Yuen Long -

Sung Shan New Village, Tai Wo, Lin Fa Tei and Ha Che

Water Quality Monitoring Result



Water Quality Monitoring Location: C1A

Location	Date	Weather	Time	DO (mg/L)	Do Saturation (%)	pH	Sal (ppt)	Temp (°C)	Turbidity (NTU)	SS (mg/L)	Remark
C1A	20241003	Sunny	15:00	7.20	87.3	7.78	0.09	28.5	5.20	2.1	
C1A	20241003	Sunny	15:00	7.15	87.2	7.76	0.09	28.5	5.16	2.4	
C1A	20241005	Sunny	16:08	7.76	94.2	7.39	0.11	29.2	5.32	<1.0	
C1A	20241005	Sunny	16:08	7.76	94.1	7.36	0.11	29.2	5.72	1.0	
C1A	20241007	Sunny	11:18	7.04	85.6	7.5	0.13	26.2	4.86	2.7	
C1A	20241007	Sunny	11:18	7.06	85.9	7.51	0.13	26.2	4.60	2.0	
C1A	20241010	Cloudy	15:54	6.81	83.0	6.93	0.08	26	6.57	<1.0	
C1A	20241010	Cloudy	15:54	6.93	83.9	6.93	0.08	26	6.41	<1.0	
C1A	20241012	Cloudy	11:50	8.10	98.1	6.97	0.07	28.2	6.43	<1.0	
C1A	20241012	Cloudy	11:50	8.05	98.0	6.94	0.07	28.2	6.56	1.5	
C1A	20241015	Sunny	13:26	6.8	88.4	7.13	0.07	29.1	3.61	<1.0	
C1A	20241015	Sunny	13:26	6.82	88.8	7.1	0.07	29.1	3.50	<1.0	
C1A	20241017	Sunny	13:21	7.88	100.5	7.35	0.06	28	3.32	<1.0	
C1A	20241017	Sunny	13:21	7.89	100.7	7.36	0.06	28	3.37	<1.0	
C1A	20241019	Sunny	10:52	7.68	93.4	7.29	0.07	28.8	4.96	<1.0	
C1A	20241019	Sunny	10:52	7.70	93.6	7.26	0.07	28.8	4.85	<1.0	
C1A	20241021	Sunny	13:08	6.87	87.9	7.23	0.06	28	2.34	<1.0	
C1A	20241021	Sunny	13:08	6.99	89.4	7.21	0.06	28	2.45	<1.0	
C1A	20241023	Cloudy	13:05	6.87	84.3	7.36	0.11	25.7	4.65	1.9	
C1A	20241023	Cloudy	13:05	6.89	84.5	7.36	0.11	25.7	4.79	2.4	
C1A	20241025	Cloudy	13:08	6.91	82.0	7.11	0.07	23.9	6.68	3.0	
C1A	20241025	Cloudy	13:08	6.91	81.9	7.12	0.07	23.9	7.13	2.6	
C1A	20241028	Cloudy	11:23	7.19	86.0	7.28	0.09	24.5	9.86	5.0	
C1A	20241028	Cloudy	11:23	7.18	85.9	7.28	0.09	24.5	9.74	3.3	
C1A	20241030	Sunny	10:57	6.88	83.7	6.95	0.09	25.4	6.96	2.4	
C1A	20241030	Sunny	10:57	6.88	83.7	6.95	0.09	25.4	6.67	1.8	

Contract No. DC/2022/02

Drainage Improvement Works at Yuen Long -

Sung Shan New Village, Tai Wo, Lin Fa Tei and Ha Che

Water Quality Monitoring Result



Water Quality Monitoring Location: C2

Location	Date	Weather	Time	DO (mg/L)	Do Saturation (%)	pH	Sal (ppt)	Temp (°C)	Turbidity (NTU)	SS (mg/L)	Remark
C2	20241003	Sunny	14:54	6.56	79.9	7.99	0.11	28.8	5.67	6.7	
C2	20241003	Sunny	14:54	6.68	81.0	7.96	0.11	28.8	5.37	6.1	
C2	20241005	Sunny	15:57	6.54	79.8	7.62	0.13	28.5	5.88	2.0	
C2	20241005	Sunny	15:57	6.65	80.9	7.61	0.13	28.5	5.75	3.4	
C2	20241007	Sunny	11:09	4.95	60.0	7.27	0.11	25.5	5.26	4.6	
C2	20241007	Sunny	11:09	4.96	60.1	7.28	0.11	25.5	4.79	4.8	
C2	20241010	Cloudy	15:46	6.15	75.0	7.16	0.08	24.9	3.73	2.0	
C2	20241010	Cloudy	15:46	6.30	76.3	7.16	0.08	24.8	3.73	2.1	
C2	20241012	Cloudy	11:34	7.99	97.0	7.39	0.03	27.1	5.52	2.0	
C2	20241012	Cloudy	11:34	7.97	96.7	7.33	0.03	27	5.83	2.0	
C2	20241015	Sunny	13:17	5.49	71.5	7.12	0.07	29	3.80	3.1	
C2	20241015	Sunny	13:17	5.15	67.0	7.11	0.07	29	3.76	3.8	
C2	20241017	Sunny	13:12	4.56	58.2	7.46	0.06	27.9	3.49	4.4	
C2	20241017	Sunny	13:12	4.53	57.6	7.43	0.06	27.9	3.46	3.3	
C2	20241019	Sunny	10:40	5.57	67.7	6.93	0.08	28.8	5.64	2.4	
C2	20241019	Sunny	10:40	5.23	63.6	6.92	0.08	28.8	5.60	2.3	
C2	20241021	Sunny	12:55	4.89	62.6	7.09	0.06	28.2	3.52	2.5	
C2	20241021	Sunny	12:55	4.89	62.6	7.09	0.06	28.2	3.59	3.3	
C2	20241023	Cloudy	12:55	4.79	58.9	7.36	0.09	25.7	4.79	5.1	
C2	20241023	Cloudy	12:48	4.80	58.9	7.36	0.09	25.7	4.80	3.9	
C2	20241025	Cloudy	12:55	8.29	92.7	7.66	0.02	20.8	6.42	5.1	
C2	20241025	Cloudy	12:55	8.29	92.7	7.68	0.02	20.8	6.56	3.2	
C2	20241028	Cloudy	11:46	4.51	54.0	7.39	0.08	24.4	3.52	3.5	
C2	20241028	Cloudy	11:46	4.67	55.9	7.41	0.08	24.4	3.65	6.0	
C2	20241030	Sunny	11:17	5.63	68.5	7.09	0.08	25.3	3.75	5.3	
C2	20241030	Sunny	11:17	5.68	69.1	7.09	0.08	25.2	3.69	4.9	

Contract No. DC/2022/02

Drainage Improvement Works at Yuen Long -

Sung Shan New Village, Tai Wo, Lin Fa Tei and Ha Che

Water Quality Monitoring Result



Water Quality Monitoring Location: C3A

Location	Date	Weather	Time	DO (mg/L)	Do Saturation (%)	pH	Sal (ppt)	Temp (°C)	Turbidity (NTU)	SS (mg/L)	Remark
C3A	20241003	Sunny	14:37	8.12	98.6	7.94	0.01	27.3	3.73	5.1	
C3A	20241003	Sunny	14:37	8.15	98.9	7.9	0.01	27.3	3.42	5.5	
C3A	20241005	Sunny	15:39	8.58	104.6	7.6	0.05	28	4.11	4.8	
C3A	20241005	Sunny	15:39	8.59	104.8	7.56	0.05	28	4.18	3.2	
C3A	20241007	Sunny	10:52	8.15	98.0	8.53	0	24.1	3.59	2.6	
C3A	20241007	Sunny	10:52	8.10	98.0	8.51	0	24.1	3.68	3.3	
C3A	20241010	Cloudy	15:30	7.95	97.0	7.88	0.03	23.3	4.21	2.1	
C3A	20241010	Cloudy	15:30	7.99	97.0	7.87	0.03	23.3	3.86	2.7	
C3A	20241012	Cloudy	11:20	8.42	102.5	7.4	0	25.6	4.34	1.8	
C3A	20241012	Cloudy	11:20	8.46	102.6	7.37	0	25.6	3.89	2.4	
C3A	20241015	Sunny	13:10	7.81	96.4	7.68	0.02	26.1	4.99	4.0	
C3A	20241015	Sunny	13:10	7.81	96.4	7.66	0.02	26.1	4.96	3.7	
C3A	20241017	Sunny	13:05	7.79	95.0	8.3	0.02	25.4	4.15	3.4	
C3A	20241017	Sunny	13:05	7.79	95.1	8.23	0.02	25.4	4.15	3.3	
C3A	20241019	Sunny	10:23	8.17	99.4	7.82	0.01	25.7	4.77	1.8	
C3A	20241019	Sunny	10:23	8.17	99.4	7.8	0.01	25.7	4.74	2.2	
C3A	20241021	Sunny	13:10	7.76	93.2	7.25	0.02	24.6	4.44	2.4	
C3A	20241021	Sunny	13:10	7.76	93.2	7.26	0.02	24.6	4.46	2.4	
C3A	20241023	Cloudy	12:48	8.22	95.2	8.24	0.02	22.7	4.44	4.1	
C3A	20241023	Cloudy	12:53	8.22	95.3	8.22	0.02	22.7	4.45	3.6	
C3A	20241025	Cloudy	13:10	8.33	93.3	7.55	0.02	20.9	5.96	11.0	
C3A	20241025	Cloudy	13:10	8.30	92.8	7.54	0.02	20.9	6.26	7.3	
C3A	20241028	Cloudy	11:39	8.15	94.3	7.67	0.02	22.6	5.67	3.4	
C3A	20241028	Cloudy	11:39	8.15	94.3	7.67	0.02	22.6	5.69	5.0	
C3A	20241030	Sunny	11:12	7.99	93.2	7.72	0.02	23.1	4.38	4.4	
C3A	20241030	Sunny	11:12	7.99	93.2	7.72	0.02	23.1	4.40	6.8	

Contract No. DC/2022/02

Drainage Improvement Works at Yuen Long -

Sung Shan New Village, Tai Wo, Lin Fa Tei and Ha Che

Water Quality Monitoring Result



Water Quality Monitoring Location: C6

Location	Date	Weather	Time	DO (mg/L)	Do Saturation (%)	pH	Sal (ppt)	Temp (°C)	Turbidity (NTU)	SS (mg/L)	Remark
C6	20241003	Sunny	13:28	7.14	86.6	7.11	0.07	30.5	6.09	8.5	
C6	20241003	Sunny	13:28	7.16	86.7	7.13	0.07	30.5	6.22	9.2	
C6	20241005	Sunny	14:33	6.79	82.5	7.17	0.05	30.1	6.58	2.6	
C6	20241005	Sunny	14:33	6.81	82.6	7.19	0.05	30.1	6.27	2.5	
C6	20241007	Sunny	9:46	7.98	95.0	7.76	0.03	25.2	6.47	4.4	
C6	20241007	Sunny	9:46	7.96	95.0	7.75	0.03	25.2	6.52	5.1	
C6	20241010	Cloudy	14:18	7.29	88.3	7.31	0.03	24.2	6.82	1.7	
C6	20241010	Cloudy	14:18	7.26	88.3	7.3	0.03	24.2	7.19	2.7	
C6	20241012	Cloudy	10:08	7.51	91.6	7.23	0.01	26.2	5.50	1.9	
C6	20241012	Cloudy	10:08	7.56	91.7	7.25	0.01	26.2	5.30	1.6	
C6	20241015	Sunny	12:15	6.96	87.6	7.38	0.05	27.2	6.97	35.0	
C6	20241015	Sunny	12:15	6.94	87.4	7.38	0.05	27.2	6.94	24.0	
C6	20241017	Sunny	12:19	8.02	97.0	8.43	0.05	25	3.40	11.4	
C6	20241017	Sunny	12:19	8.03	96.9	8.42	0.05	25	3.37	9.0	
C6	20241019	Sunny	9:12	7.07	86.0	7.35	0.04	27.9	6.92	2.2	
C6	20241019	Sunny	9:12	7.05	85.7	7.35	0.04	27.9	6.89	2.6	
C6	20241021	Sunny	11:36	6.92	85.7	7.49	0.06	26.2	6.53	11.0	
C6	20241021	Sunny	11:36	6.92	85.6	7.49	0.06	26.2	6.59	12.0	
C6	20241023	Cloudy	11:39	7.59	91.2	7.54	0.04	24.6	6.51	7.4	
C6	20241023	Cloudy	11:39	7.59	91.3	7.54	0.04	24.6	6.62	8.8	
C6	20241025	Cloudy	10:26	7.67	89.2	8.11	0.05	22.9	7.97	11.4	
C6	20241025	Cloudy	10:26	7.65	88.9	8.12	0.05	22.9	7.68	19.0	
C6	20241028	Cloudy	10:39	7.52	88.9	7.88	0.05	23.8	9.52	5.7	
C6	20241028	Cloudy	10:39	7.56	89.5	7.83	0.05	23.8	9.84	6.3	
C6	20241030	Sunny	10:20	7.34	86.9	7.38	0.05	23.8	7.00	34.0	
C6	20241030	Sunny	10:20	7.34	86.9	7.38	0.05	23.8	7.66	32.0	

Contract No. DC/2022/02

Drainage Improvement Works at Yuen Long -

Sung Shan New Village, Tai Wo, Lin Fa Tei and Ha Che

Water Quality Monitoring Result



Water Quality Monitoring Location: C7A

Location	Date	Weather	Time	DO (mg/L)	Do Saturation (%)	pH	Sal (ppt)	Temp (°C)	Turbidity (NTU)	SS (mg/L)	Remark
C7A	20241003	Sunny	13:54	7.24	88.0	7.63	0.09	28.8	7.46	8.0	
C7A	20241003	Sunny	13:54	7.23	87.9	7.61	0.09	28.8	7.06	8.8	
C7A	20241005	Sunny	14:56	7.43	90.5	7.75	0.11	29.5	7.64	2.0	
C7A	20241005	Sunny	14:56	7.45	90.4	7.72	0.11	29.5	7.05	1.8	
C7A	20241007	Sunny	10:08	6.14	74.5	7.55	0.28	26	7.36	5.3	
C7A	20241007	Sunny	10:08	6.12	74.2	7.51	0.28	26	7.15	5.8	
C7A	20241010	Cloudy	14:45	6.36	77.5	7.36	0.09	23.9	6.66	1.6	
C7A	20241010	Cloudy	14:45	6.35	77.5	7.36	0.09	23.9	6.79	1.5	
C7A	20241012	Cloudy	10:32	7.02	85.0	7.39	0.11	28	7.05	1.6	
C7A	20241012	Cloudy	10:32	6.96	84.9	7.35	0.11	28	7.47	1.9	
C7A	20241015	Sunny	12:29	6.47	84.1	7.48	0.13	28.9	10.10	15.0	
C7A	20241015	Sunny	12:29	6.41	83.3	7.47	0.13	28.9	10.70	14.0	
C7A	20241017	Sunny	12:24	6.92	88.4	7.97	0.14	27.9	10.32	5.3	
C7A	20241017	Sunny	12:24	6.91	88.1	7.96	0.14	27.9	10.72	7.9	
C7A	20241019	Sunny	9:41	6.45	78.4	7.35	0.11	29.4	8.30	2.1	
C7A	20241019	Sunny	9:41	6.39	77.7	7.34	0.11	29.4	8.39	1.8	
C7A	20241021	Sunny	11:56	5.90	74.5	7.53	0.11	27.4	7.05	13.0	
C7A	20241021	Sunny	11:56	5.85	73.9	7.52	0.11	27.4	7.75	11.0	
C7A	20241023	Cloudy	12:00	5.93	72.1	7.26	0.28	25.2	9.06	84.0	
C7A	20241023	Cloudy	12:00	5.90	71.8	7.24	0.28	25.2	8.64	148.0	
C7A	20241025	Cloudy	10:41	5.41	64.9	7.65	0.11	24.4	9.29	8.3	
C7A	20241025	Cloudy	10:41	5.41	64.8	7.66	0.11	24.4	9.60	9.7	
C7A	20241028	Cloudy	10:56	6.01	72.3	7.65	0.11	24.7	10.01	12.0	
C7A	20241028	Cloudy	10:56	6.04	72.6	7.66	0.11	24.7	9.98	9.5	
C7A	20241030	Sunny	10:36	6.17	74.0	7.31	0.11	24.5	14.97	15.0	
C7A	20241030	Sunny	10:36	6.24	74.8	7.31	0.11	24.5	14.79	20.0	

Contract No. DC/2022/02

Drainage Improvement Works at Yuen Long -

Sung Shan New Village, Tai Wo, Lin Fa Tei and Ha Che

Water Quality Monitoring Result



Water Quality Monitoring Location: C8

Location	Date	Weather	Time	DO (mg/L)	Do Saturation (%)	pH	Sal (ppt)	Temp (°C)	Turbidity (NTU)	SS (mg/L)	Remark
C8	20241003	Sunny	14:07	6.60	80.5	7.52	0.09	28.9	7.98	3.7	
C8	20241003	Sunny	14:07	6.57	80.3	7.49	0.09	28.9	7.88	2.6	
C8	20241005	Sunny	15:13	7.49	91.0	7.33	0.09	28.7	7.52	<1.0	
C8	20241005	Sunny	15:13	7.47	90.7	7.34	0.09	28.7	7.59	<1.0	
C8	20241007	Sunny	10:26	6.77	82.1	7.91	0.07	25.9	8.43	1.3	
C8	20241007	Sunny	10:26	6.89	83.5	7.92	0.07	25.9	8.21	2.1	
C8	20241010	Cloudy	15:00	6.92	84.2	6.88	0.10	24.7	7.03	<1.0	
C8	20241010	Cloudy	15:00	6.70	81.7	6.90	0.10	24.7	7.66	<1.0	
C8	20241012	Cloudy	10:52	8.20	100.0	7.53	0.07	28.6	8.24	<1.0	
C8	20241012	Cloudy	10:52	8.24	99.8	7.51	0.07	28.6	8.17	<1.0	
C8	20241015	Sunny	12:41	6.87	89.2	7.33	0.10	28.9	10.62	3.5	
C8	20241015	Sunny	12:41	6.80	88.2	7.31	0.10	28.9	10.01	2.0	
C8	20241017	Sunny	12:38	6.95	88.9	7.92	0.10	28.0	10.92	3.9	
C8	20241017	Sunny	12:38	6.84	87.5	7.79	0.10	28.0	10.93	2.8	
C8	20241019	Sunny	9:54	6.71	81.6	7.46	0.12	29.0	9.86	<1.0	
C8	20241019	Sunny	9:54	6.64	80.8	7.44	0.12	29.0	9.25	<1.0	
C8	20241021	Sunny	12:07	6.23	74.4	7.33	0.09	27.1	9.25	4.3	
C8	20241021	Sunny	12:07	6.23	74.4	7.33	0.09	27.1	9.24	5.8	
C8	20241023	Cloudy	12:15	6.50	80.0	7.81	0.08	25.9	11.39	4.8	
C8	20241023	Cloudy	12:15	6.62	81.4	7.84	0.08	25.9	11.62	3.3	
C8	20241025	Cloudy	10:48	7.00	84.5	7.79	0.09	24.8	11.71	3.5	
C8	20241025	Cloudy	10:48	6.76	81.6	7.79	0.09	24.8	11.60	4.0	
C8	20241028	Cloudy	11:02	6.22	74.7	7.69	0.08	24.6	10.13	2.9	
C8	20241028	Cloudy	11:02	6.23	74.9	7.71	0.08	24.6	9.93	3.6	
C8	20241030	Sunny	10:01	7.00	84.5	7.99	0.09	24.8	11.71	8.1	
C8	20241030	Sunny	10:01	6.76	81.6	7.99	0.09	24.8	11.60	6.2	

Contract No. DC/2022/02

Drainage Improvement Works at Yuen Long -

Sung Shan New Village, Tai Wo, Lin Fa Tei and Ha Che

Water Quality Monitoring Result



Water Quality Monitoring Location: C9

Location	Date	Weather	Time	DO (mg/L)	Do Saturation (%)	pH	Sal (ppt)	Temp (°C)	Turbidity (NTU)	SS (mg/L)	Remark
C9	20241003	Sunny	12:45	8.77	106.4	7.46	0.08	27.6	7.31	6.8	
C9	20241003	Sunny	12:45	8.73	106.3	7.44	0.08	27.6	6.76	7.2	
C9	20241005	Sunny	13:50	6.98	84.5	7.28	0.07	28.3	7.01	1.3	
C9	20241005	Sunny	13:50	6.92	84.2	7.24	0.07	28.3	7.62	2.3	
C9	20241007	Sunny	9:03	8.53	103.4	7.81	0.04	25.9	6.64	5.2	
C9	20241007	Sunny	9:03	8.49	103.4	7.8	0.04	25.9	6.79	5.9	
C9	20241010	Cloudy	13:38	8.51	103.7	7.55	0.03	23.4	4.67	1.5	
C9	20241010	Cloudy	13:38	8.50	103.7	7.55	0.03	23.4	4.61	2.5	
C9	20241012	Cloudy	9:28	8.81	107.5	8.04	0.04	25.1	4.81	2.6	
C9	20241012	Cloudy	9:28	8.87	107.6	7.83	0.04	25.1	5.00	1.7	
C9	20241015	Sunny	11:33	7.93	97.1	7.97	0.05	25.6	5.62	4.0	
C9	20241015	Sunny	11:33	7.93	97.1	7.97	0.05	25.6	5.70	4.9	
C9	20241017	Sunny	11:52	8.04	97.3	8.45	0.05	25.0	3.43	4.2	
C9	20241017	Sunny	11:52	8.03	97.1	8.44	0.05	25.0	3.39	2.9	
C9	20241019	Sunny	8:32	7.81	95.0	8.14	0.05	26.2	6.48	1.4	
C9	20241019	Sunny	8:32	7.81	95.0	8.14	0.05	26.2	6.58	2.4	
C9	20241021	Sunny	11:04	8.09	96.6	7.59	0.04	24.3	4.42	4.4	
C9	20241021	Sunny	11:04	8.09	96.7	7.59	0.04	24.3	4.43	3.7	
C9	20241023	Cloudy	11:10	8.31	96.8	7.67	0.04	23	5.26	7.2	
C9	20241023	Cloudy	11:10	8.31	96.8	7.67	0.04	23	5.06	4.4	
C9	20241025	Cloudy	10:00	8.67	97.7	7.68	0.04	21.3	4.49	2.2	
C9	20241025	Cloudy	10:00	8.65	97.5	7.65	0.04	21.3	4.47	2.9	
C9	20241028	Cloudy	10:07	8.4	97.7	7.38	0.05	22.9	2.39	1.9	
C9	20241028	Cloudy	10:07	8.36	97.2	7.41	0.05	22.9	2.17	1.6	
C9	20241030	Sunny	9:29	7.94	92.0	7.49	0.05	22.7	2.30	9.4	
C9	20241030	Sunny	9:29	7.94	92.0	7.49	0.05	22.7	2.28	7.3	

Contract No. DC/2022/02

Drainage Improvement Works at Yuen Long -

Sung Shan New Village, Tai Wo, Lin Fa Tei and Ha Che

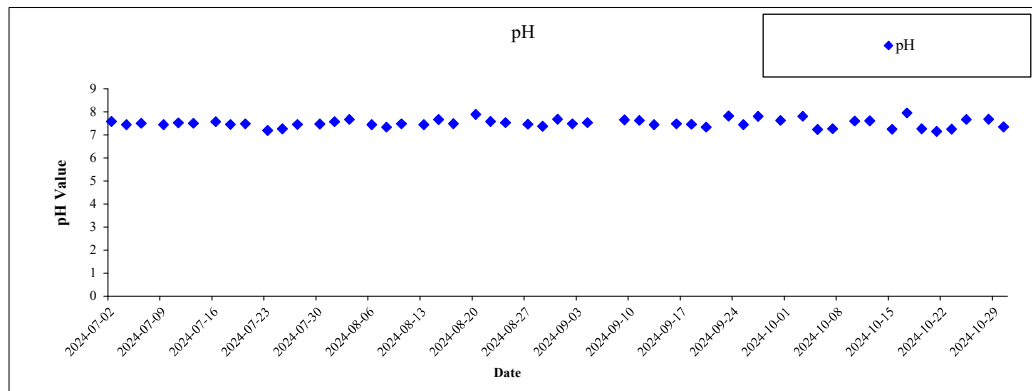
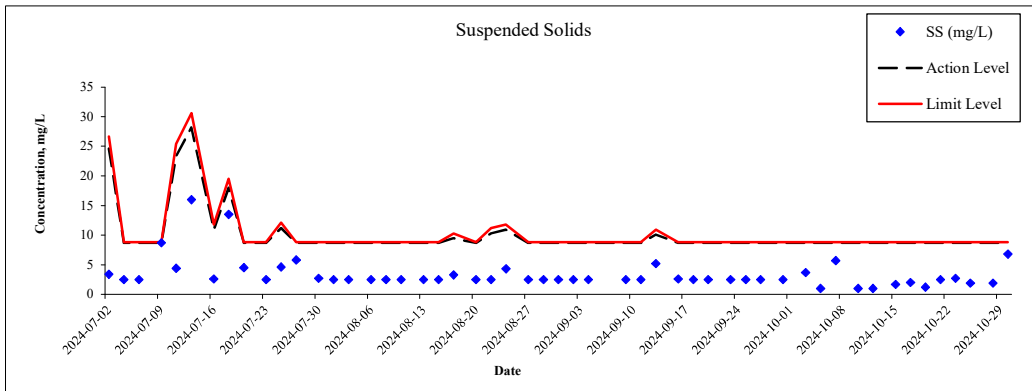
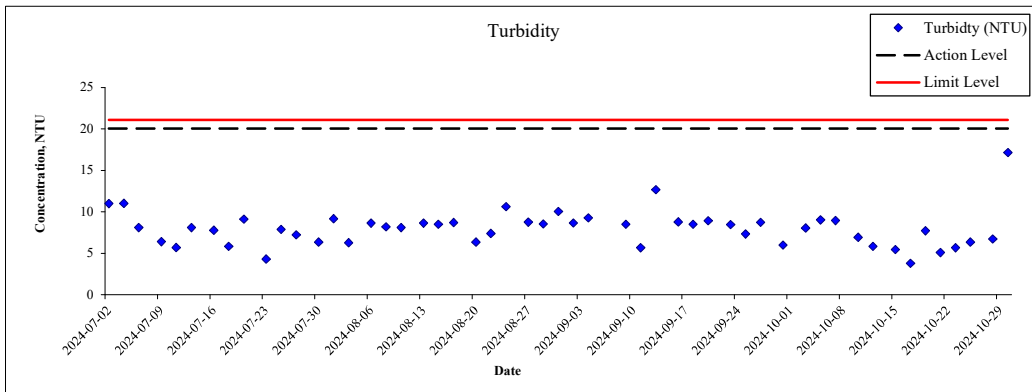
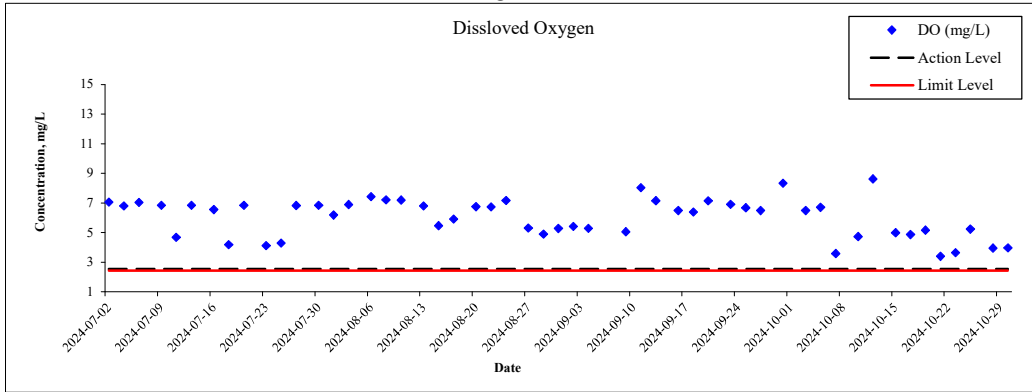
Water Quality Monitoring Result



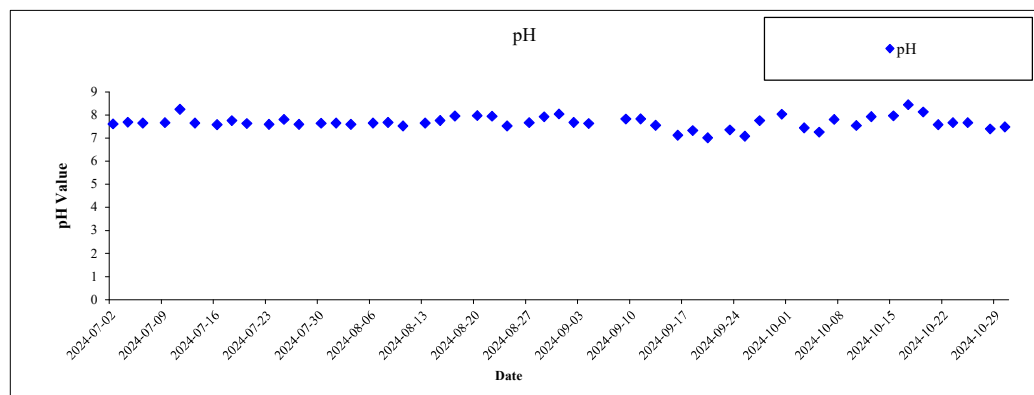
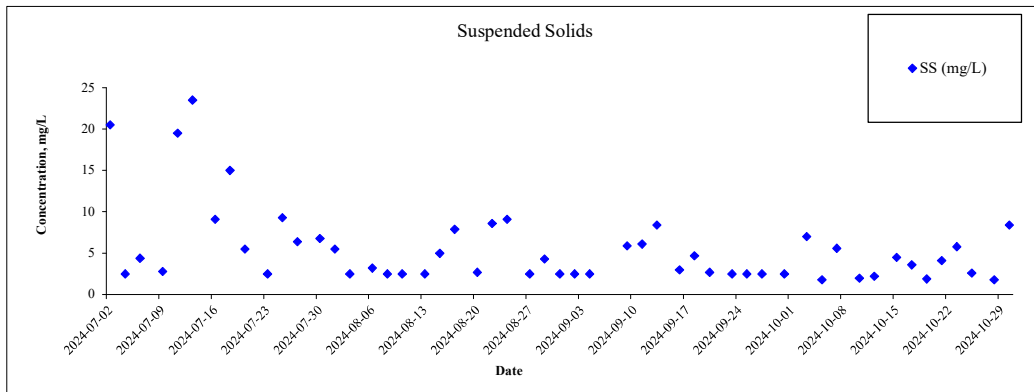
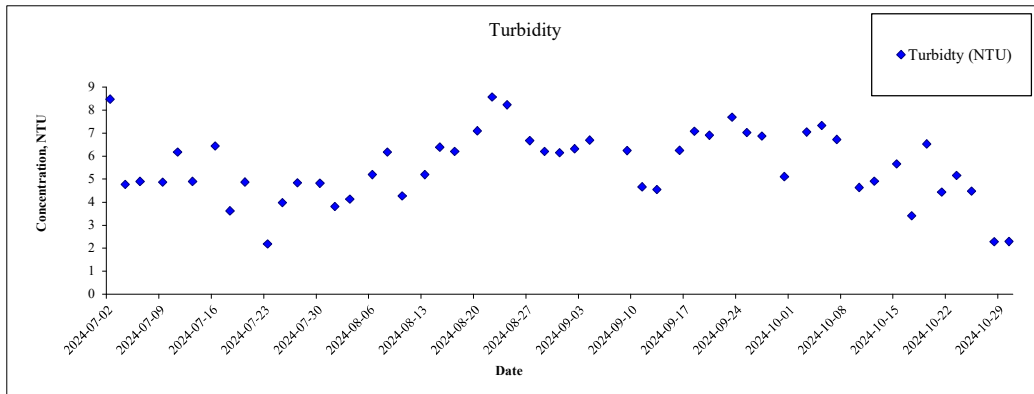
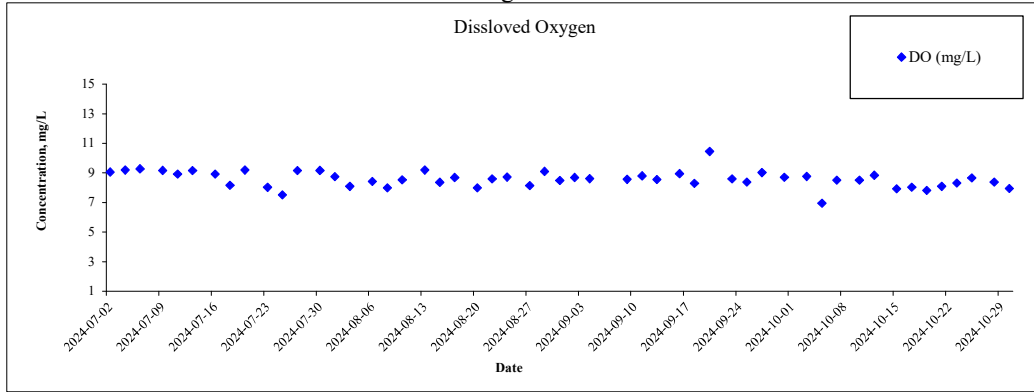
Water Quality Monitoring Location: C10

Location	Date	Weather	Time	DO (mg/L)	Do Saturation (%)	pH	Sal (ppt)	Temp (°C)	Turbidity (NTU)	SS (mg/L)	Remark
C10	20241003	Sunny	12:58	6.52	79.4	7.82	0.07	27.5	8.26	3.6	
C10	20241003	Sunny	12:58	6.47	78.4	7.79	0.07	27.5	7.84	3.7	
C10	20241005	Sunny	14:02	6.77	82.0	7.24	0.07	27.9	9.06	<1.0	
C10	20241005	Sunny	14:02	6.65	81.0	7.21	0.07	27.9	9.01	<1.0	
C10	20241007	Sunny	9:13	3.58	45.2	7.27	0.1	26.8	8.84	4.3	
C10	20241007	Sunny	9:13	3.6	45.5	7.27	0.1	26.8	9.09	7.0	
C10	20241010	Cloudy	13:49	4.75	57.6	7.61	0.10	23.4	6.84	<1.0	
C10	20241010	Cloudy	13:49	4.72	57.6	7.59	0.10	23.4	7.05	<1.0	
C10	20241012	Cloudy	9:39	8.48	103.5	7.71	0.04	26.5	5.47	<1.0	
C10	20241012	Cloudy	9:39	8.79	107.1	7.5	0.04	26.2	6.20	<1.0	
C10	20241015	Sunny	11:50	5.02	63.1	7.25	0.08	27.3	5.54	1.4	
C10	20241015	Sunny	11:50	4.98	58.7	7.23	0.08	27.3	5.40	1.9	
C10	20241017	Sunny	12:07	4.98	61.6	8.03	0.08	26.2	3.74	2.1	
C10	20241017	Sunny	12:07	4.78	59.2	7.87	0.08	26.2	3.85	1.9	
C10	20241019	Sunny	8:42	5.19	63.1	7.27	0.09	26.8	7.79	<1.0	
C10	20241019	Sunny	8:42	5.15	62.6	7.25	0.09	26.8	7.65	1.3	
C10	20241021	Sunny	11:15	3.4	41.8	7.15	0.08	25.8	5.04	2.5	
C10	20241021	Sunny	11:15	3.39	41.7	7.14	0.08	25.8	5.13	2.4	
C10	20241023	Cloudy	11:21	3.63	43.5	7.25	0.08	24.4	5.67	2.9	
C10	20241023	Cloudy	11:21	3.66	43.9	7.25	0.08	24.4	5.66	2.4	
C10	20241025	Cloudy	10:05	5.25	60.3	7.66	0.08	22.2	6.44	1.3	
C10	20241025	Cloudy	10:05	5.24	60.1	7.68	0.08	22.2	6.29	2.4	
C10	20241028	Cloudy	10:17	3.99	47.3	7.66	0.08	23.9	6.91	2.0	
C10	20241028	Cloudy	10:17	3.94	46.8	7.69	0.08	23.9	6.54	1.8	
C10	20241030	Sunny	9:40	3.97	46.9	7.35	0.11	23.7	17.19	7.9	
C10	20241030	Sunny	9:40	3.98	47.0	7.35	0.11	23.7	17.13	5.6	

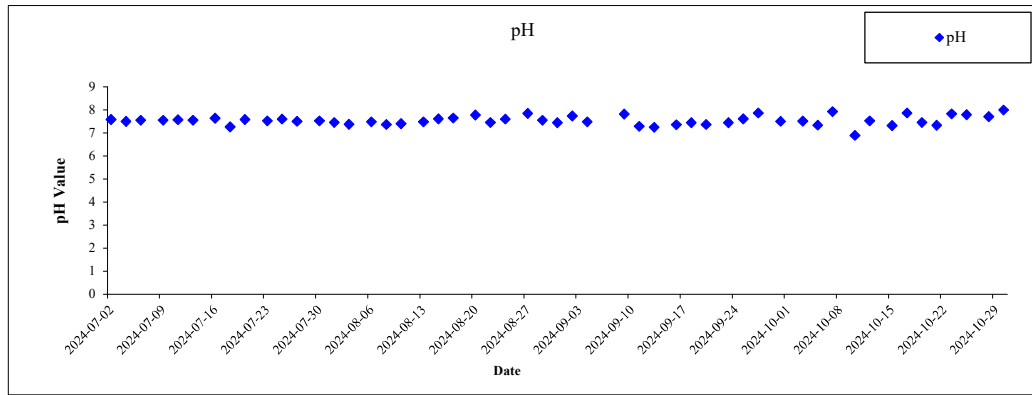
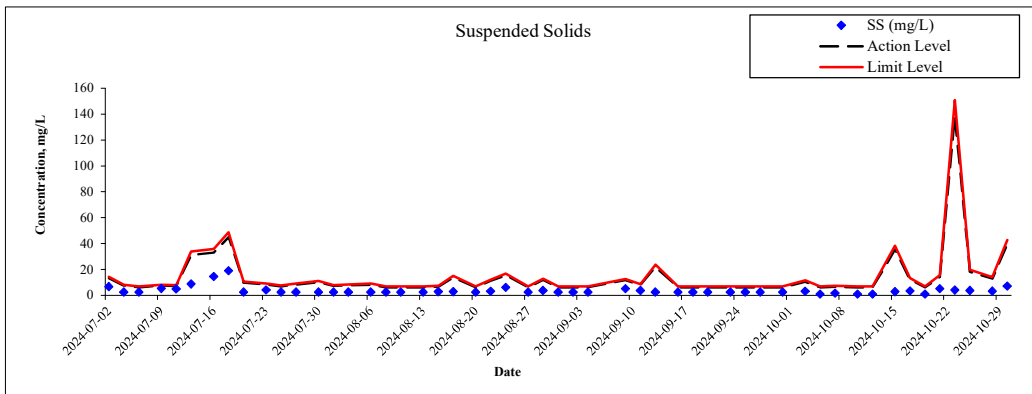
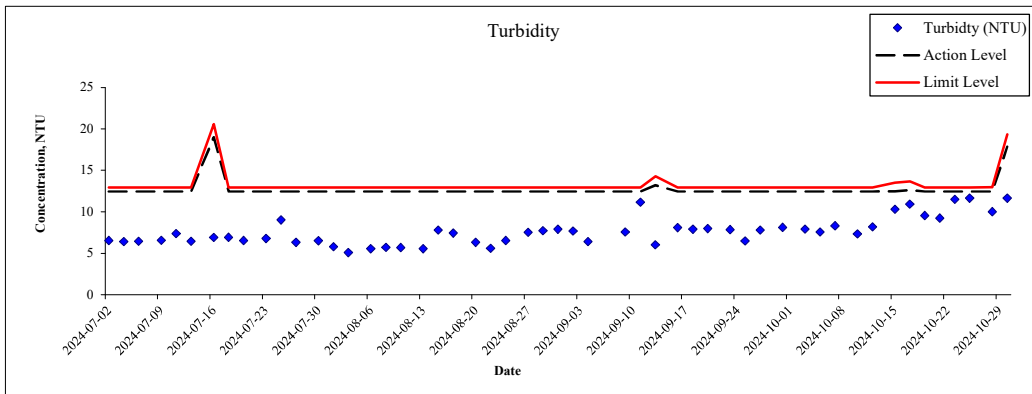
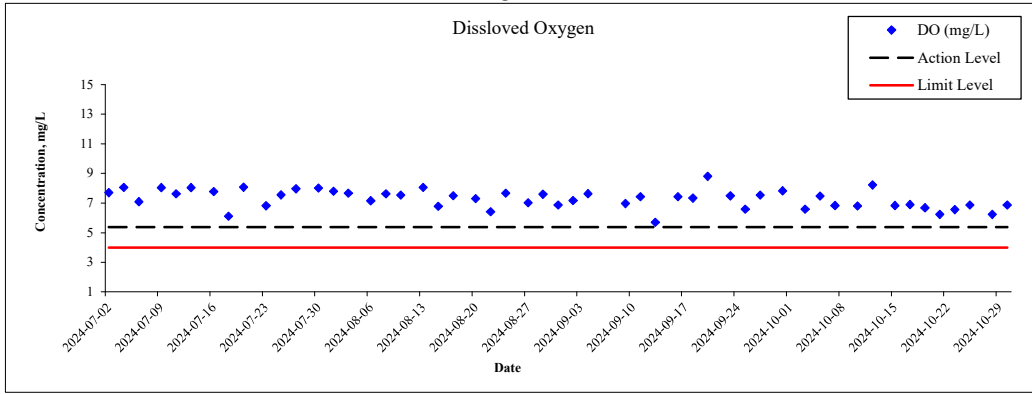
Monitoring Location: C10



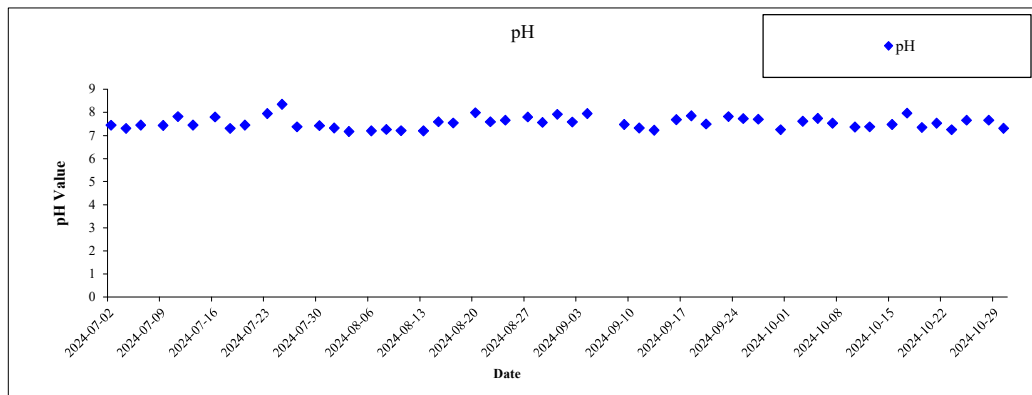
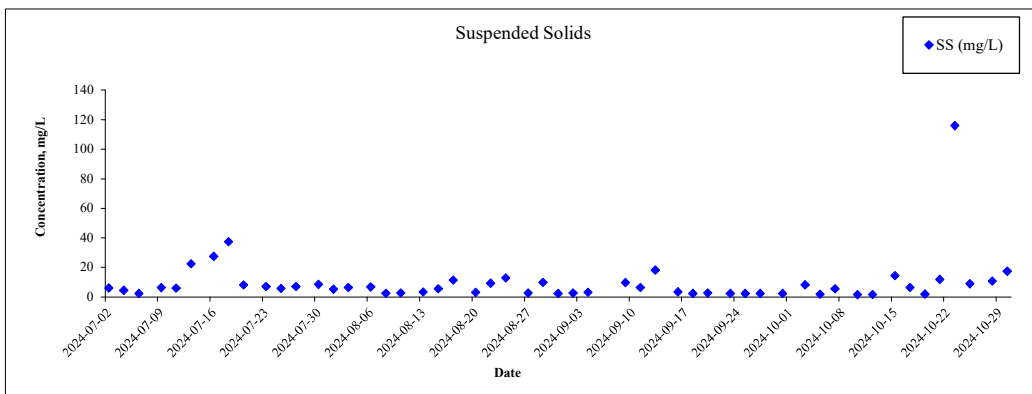
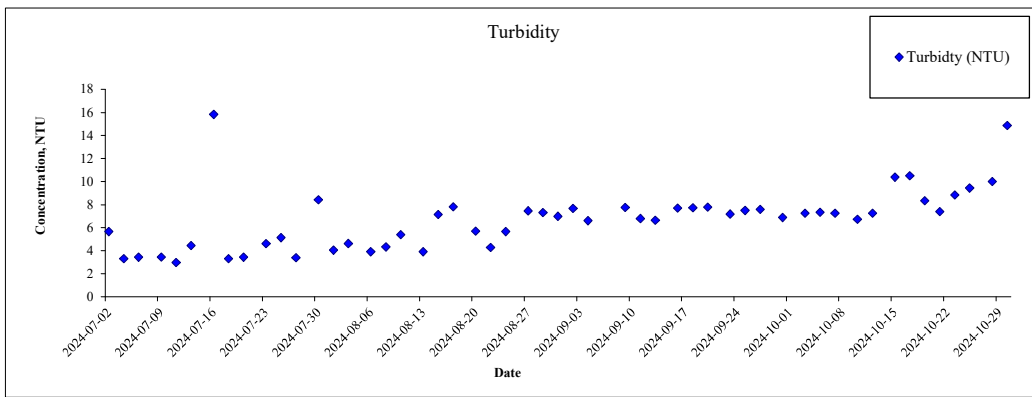
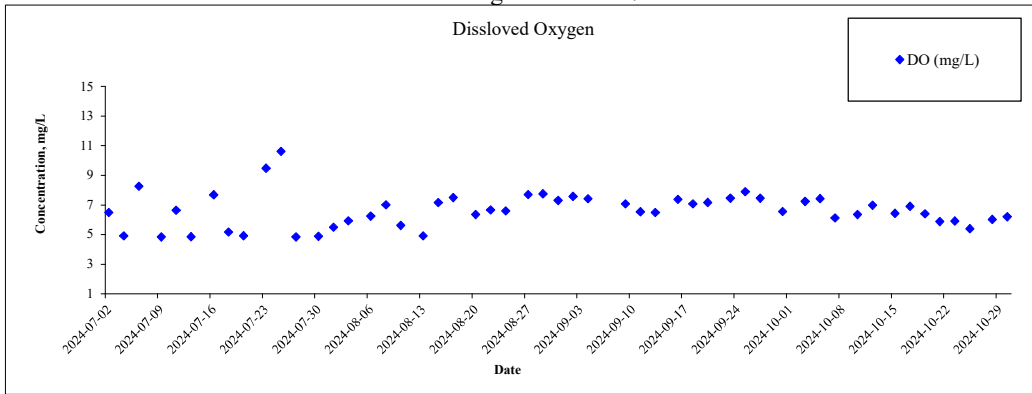
Monitoring Location: C9



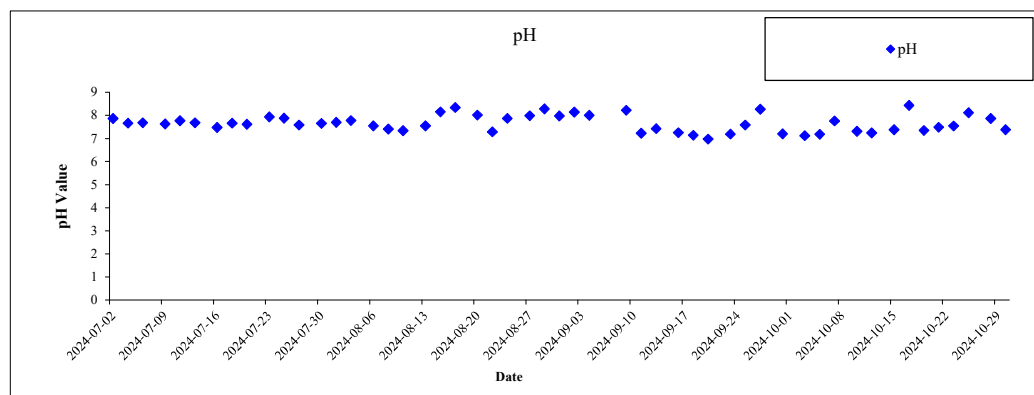
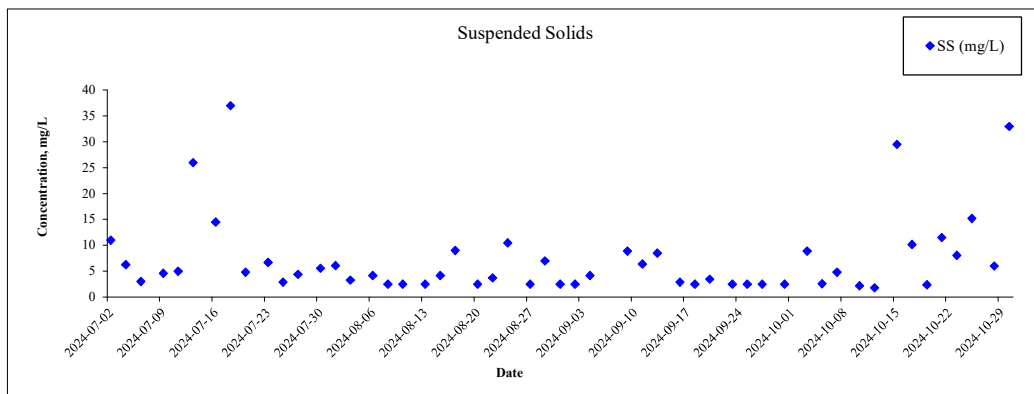
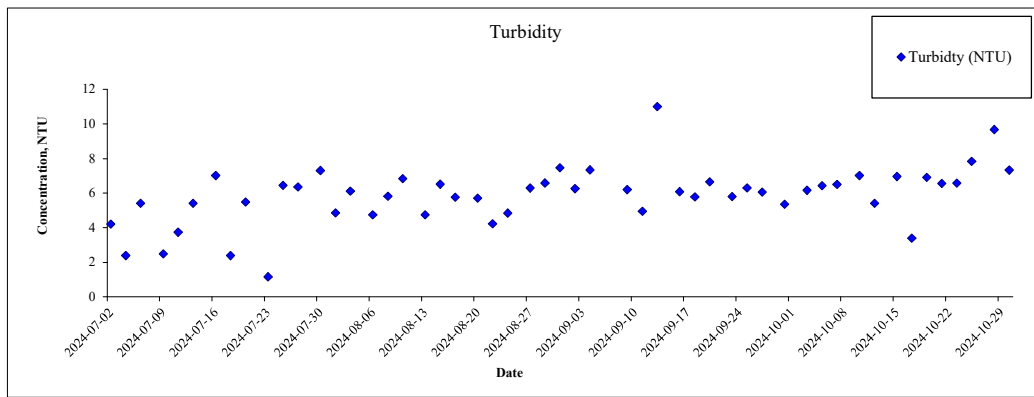
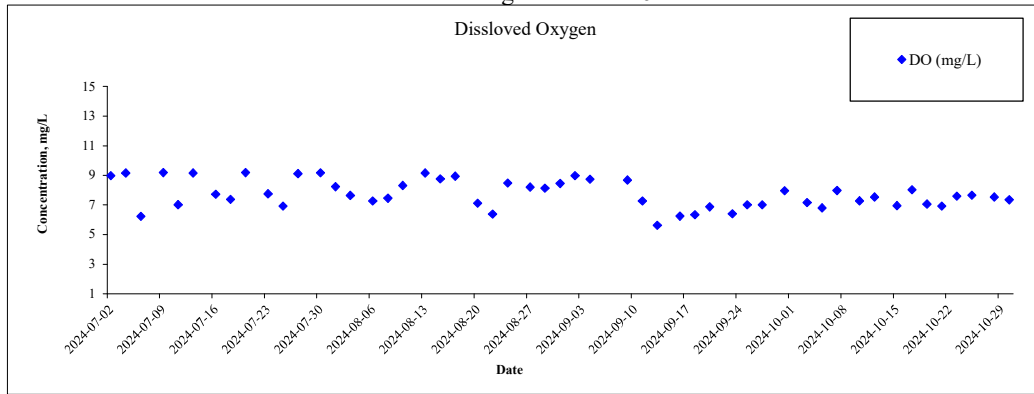
Monitoring Location: C8



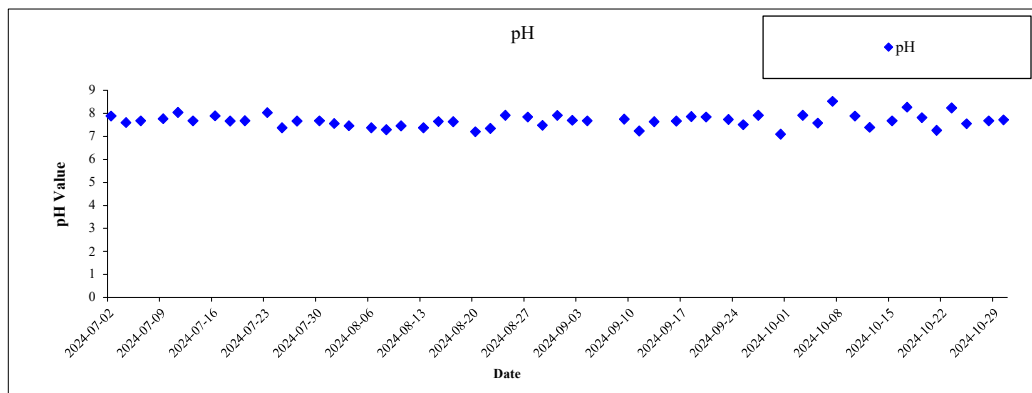
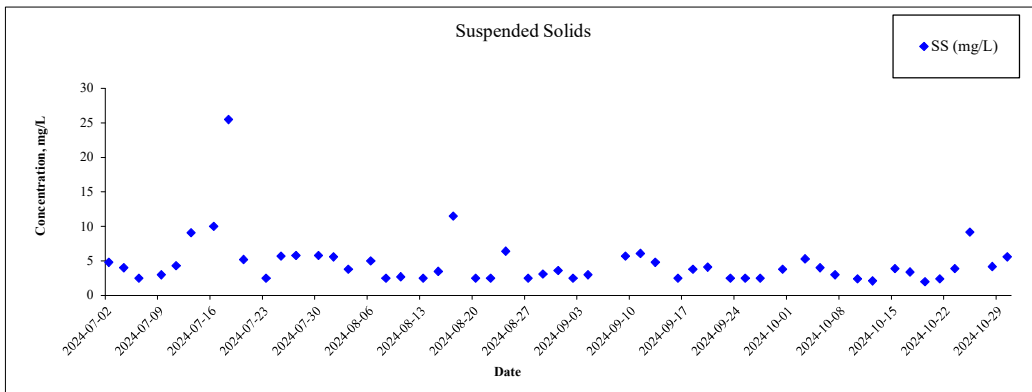
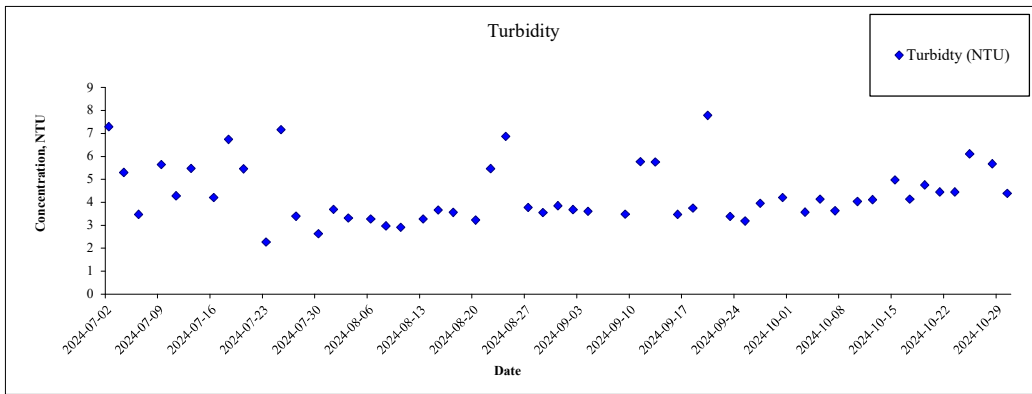
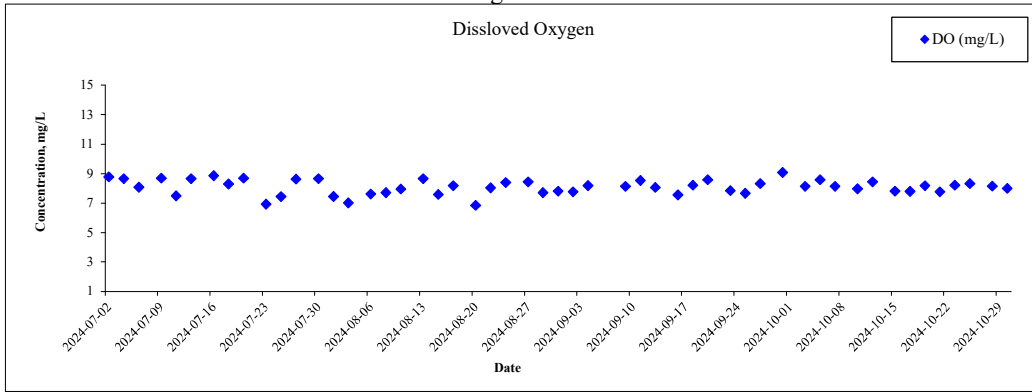
Monitoring Location: C7A



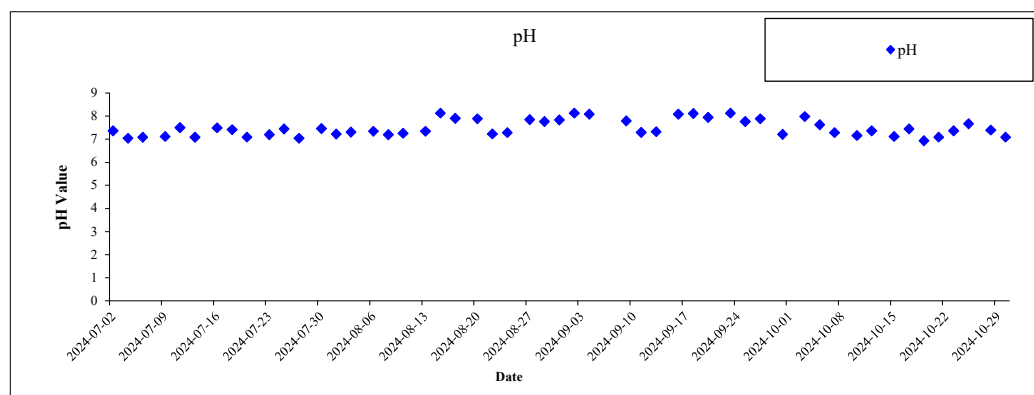
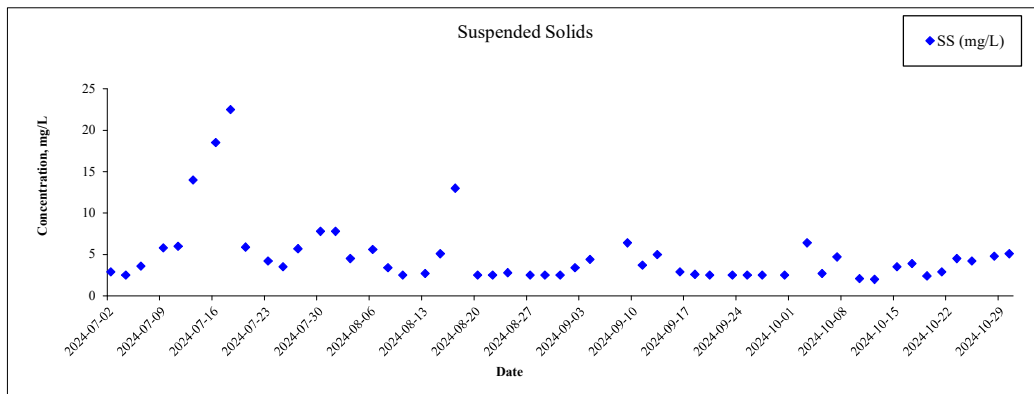
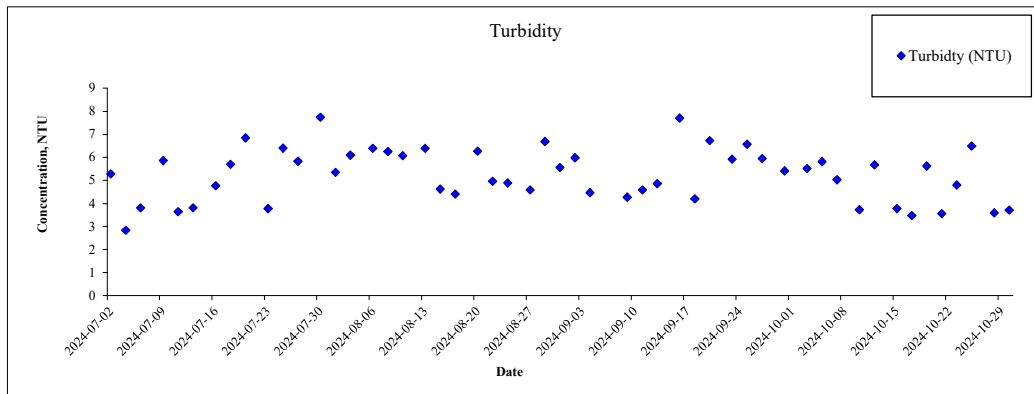
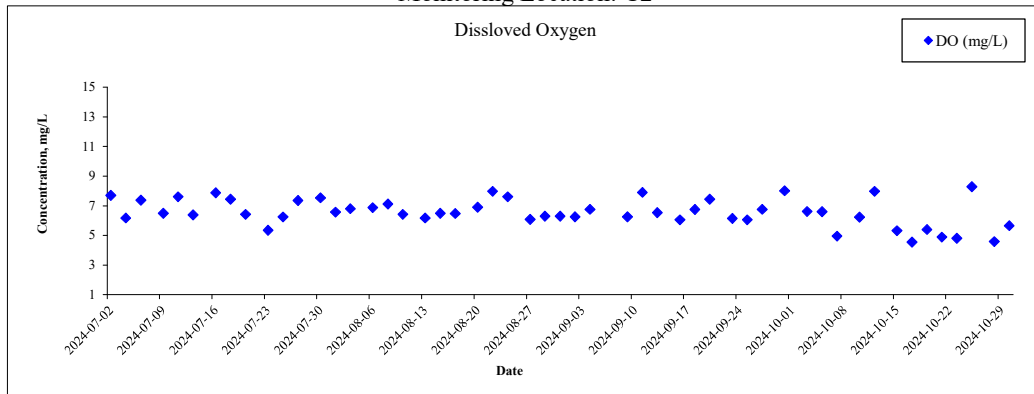
Monitoring Location: C6



Monitoring Location: C3A



Monitoring Location: C2



Monitoring Location: C1A

