

Appendix 2.4 Impact Water Quality Monitoring Data

Contract No. DC/2022/02
 Drainage Improvement Works at Yuen Long -
 Sung Shan New Village, Tai Wo, Lin Fa Tei and Ha Che
 Water Quality Monitoring Result



Water Quality Monitoring Location: C1A

Location	Date	Weather	Time	DO (mg/L)	Do Saturation (%)	pH	Sal (ppt)	Temp (°C)	Turbidity (NTU)	SS (mg/L)	Remark
C1A	20240702	Cloudy	15:41	7.77	104.1	7.34	0.06	30.70	3.03	<2.5	
C1A	20240702	Cloudy	15:41	7.75	103.8	7.32	0.06	30.70	3.08	<2.5	
C1A	20240704	Cloudy	15:37	6.94	93.5	7.20	0.06	31.00	2.64	<2.5	
C1A	20240704	Cloudy	15:37	6.92	93.2	7.20	0.06	31.00	2.63	<2.5	
C1A	20240706	Cloudy	11:16	7.70	103.4	7.32	0.08	28.50	4.71	<2.5	
C1A	20240706	Cloudy	11:16	7.58	101.7	7.90	0.08	28.50	4.69	<2.5	
C1A	20240709	Cloudy	15:50	6.78	89.2	7.40	0.06	31.10	7.69	<2.5	
C1A	20240709	Cloudy	15:50	6.69	89.4	7.36	0.06	31.30	7.68	3.6	
C1A	20240711	Sunny	16:01	7.84	109.1	7.49	0.07	33.00	4.03	<2.5	
C1A	20240711	Sunny	16:02	7.83	109.0	7.47	0.07	33.00	3.48	<2.5	
C1A	20240713	Fine	10:57	6.87	87.4	7.32	0.08	31.00	4.71	3.9	
C1A	20240713	Fine	10:57	6.76	86.0	7.90	0.08	30.80	4.69	4.8	
C1A	20240716	Sunny	15:54	7.84	104.0	7.49	0.06	30.10	8.95	7.9	
C1A	20240716	Sunny	15:54	7.82	103.8	7.48	0.06	30.10	9.16	6.4	
C1A	20240718	Sunny	15:29	7.65	94.4	7.44	0.06	26.00	10.13	16.0	
C1A	20240718	Sunny	15:29	7.65	94.4	7.44	0.06	26.00	10.05	14.0	
C1A	20240720	Cloudy	11:19	7.13	95.0	7.36	0.09	31.60	6.68	<2.5	
C1A	20240720	Cloudy	11:19	7.21	96.1	7.34	0.09	31.50	6.67	<2.5	
C1A	20240723	Sunny	15:31	7.12	102.3	7.49	0.10	32.20	9.69	<2.5	
C1A	20240723	Sunny	15:31	7.11	102.3	7.48	0.10	32.20	9.73	<2.5	
C1A	20240725	Sunny	15:51	7.29	95.0	7.33	0.12	31.80	8.37	<2.5	
C1A	20240725	Sunny	15:52	7.30	95.2	7.33	0.12	31.80	8.21	<2.5	
C1A	20240727	Fine	10:32	7.11	91.4	7.32	0.05	31.10	4.64	5.7	
C1A	20240727	Fine	10:32	7.23	94.5	7.29	0.05	31.20	4.62	5.0	
C1A	20240730	Cloudy	14:50	7.00	88.6	7.30	0.07	27.80	6.67	2.9	
C1A	20240730	Cloudy	14:50	7.03	88.9	7.32	0.07	27.80	6.65	<2.5	

Contract No. DC/2022/02
 Drainage Improvement Works at Yuen Long -
 Sung Shan New Village, Tai Wo, Lin Fa Tei and Ha Che
 Water Quality Monitoring Result



Water Quality Monitoring Location: C2

Location	Date	Weather	Time	DO (mg/L)	Do Saturation (%)	pH	Sal (ppt)	Temp (°C)	Turbidity (NTU)	SS (mg/L)	Remark
C2	20240702	Cloudy	15:25	7.74	103.9	7.37	0.05	30.90	5.27	2.7	
C2	20240702	Cloudy	15:25	7.67	103.0	7.34	0.05	30.80	5.29	3.1	
C2	20240704	Cloudy	15:20	6.20	83.7	7.04	0.06	31.20	2.88	<2.5	
C2	20240704	Cloudy	15:20	6.15	83.0	7.03	0.06	31.10	2.79	<2.5	
C2	20240706	Cloudy	11:07	7.44	99.9	7.11	0.09	27.60	3.82	4.3	
C2	20240706	Cloudy	11:07	7.32	98.3	7.05	0.09	27.60	3.79	2.8	
C2	20240709	Cloudy	15:38	6.60	83.7	7.11	0.07	31.40	5.91	5.6	
C2	20240709	Cloudy	15:38	6.40	84.2	7.13	0.07	31.20	5.81	6.0	
C2	20240711	Sunny	15:47	7.62	106.9	7.51	0.07	33.40	3.81	5.9	
C2	20240711	Sunny	15:47	7.59	106.5	7.49	0.07	33.50	3.49	6.0	
C2	20240713	Fine	10:41	6.36	84.0	7.11	0.09	31.20	3.82	15.0	
C2	20240713	Fine	10:41	6.42	84.3	7.05	0.09	30.80	3.79	13.0	
C2	20240716	Sunny	15:39	7.88	104.6	7.52	0.06	30.10	4.99	18.0	
C2	20240716	Sunny	15:39	7.87	104.4	7.45	0.06	30.10	4.54	19.0	
C2	20240718	Sunny	15:18	7.45	92.0	7.42	0.05	26.10	5.4	25.0	
C2	20240718	Sunny	15:19	7.44	91.8	7.39	0.05	26.10	5.99	20.0	
C2	20240720	Cloudy	11:01	6.44	84.3	7.11	0.10	31.40	6.91	5.7	
C2	20240720	Cloudy	11:01	6.42	84.1	7.07	0.11	31.30	6.78	6.1	
C2	20240723	Sunny	15:13	5.35	74.2	7.20	0.08	32.80	3.8	4.5	
C2	20240723	Sunny	15:13	5.34	74.1	7.19	0.08	32.80	3.75	3.9	
C2	20240725	Sunny	15:44	6.21	84.7	7.44	0.09	32.10	6.35	2.8	
C2	20240725	Sunny	15:44	6.29	82.6	7.45	0.09	32.10	6.44	4.2	
C2	20240727	Fine	10:20	7.37	96.3	7.05	0.06	31.40	5.84	6.9	
C2	20240727	Fine	10:20	7.35	96.0	7.02	0.06	31.30	5.81	4.5	
C2	20240730	Cloudy	14:35	7.54	95.4	7.46	0.05	27.40	7.72	7.6	
C2	20240730	Cloudy	14:35	7.54	95.4	7.45	0.05	27.40	7.75	7.9	

Contract No. DC/2022/02
 Drainage Improvement Works at Yuen Long -
 Sung Shan New Village, Tai Wo, Lin Fa Tei and Ha Che
 Water Quality Monitoring Result



Water Quality Monitoring Location: C3A

Location	Date	Weather	Time	DO (mg/L)	Do Saturation (%)	pH	Sal (ppt)	Temp (°C)	Turbidity (NTU)	SS (mg/L)	Remark
C3A	20240702	Cloudy	15:02	8.78	114.4	7.93	0.02	29.10	7.41	5.2	
C3A	20240702	Cloudy	15:02	8.77	114.2	7.82	0.02	29.10	7.18	4.4	
C3A	20240704	Cloudy	15:09	8.66	112.1	7.66	0.02	28.70	5.41	<2.5	
C3A	20240704	Cloudy	15:09	8.65	112.0	7.54	0.02	28.70	5.21	5.5	
C3A	20240706	Cloudy	10:56	8.10	108.7	7.65	0.05	28.50	3.5	<2.5	
C3A	20240706	Cloudy	10:56	8.05	108.1	7.68	0.05	28.30	3.46	<2.5	
C3A	20240709	Cloudy	15:26	8.71	112.1	7.76	0.05	28.70	5.66	<2.5	
C3A	20240709	Cloudy	15:26	8.68	112.4	7.78	0.05	28.70	5.64	3.5	
C3A	20240711	Sunny	15:31	7.55	99.7	8.05	0.04	31.10	4.33	4.2	
C3A	20240711	Sunny	15:31	7.43	98.1	8.02	0.04	31.10	4.24	4.3	
C3A	20240713	Fine	10:28	8.64	111.5	7.65	0.05	28.50	5.5	9.2	
C3A	20240713	Fine	10:28	8.65	111.8	7.68	0.05	28.30	5.46	8.9	
C3A	20240716	Sunny	15:26	8.86	115.3	7.95	0.02	29.00	4.1	10.0	
C3A	20240716	Sunny	15:26	8.85	115.1	7.83	0.02	29.00	4.34	10.0	
C3A	20240718	Sunny	15:06	8.30	101.9	7.67	0.01	25.80	6.72	25.0	
C3A	20240718	Sunny	15:06	8.30	101.9	7.64	0.01	25.80	6.77	26.0	
C3A	20240720	Cloudy	10:48	8.69	112.8	7.69	0.05	29.10	5.45	4.8	
C3A	20240720	Cloudy	10:48	8.68	112.5	7.67	0.05	29.10	5.46	5.6	
C3A	20240723	Sunny	15:07	6.93	99.7	8.04	0.06	35.00	2.29	<2.5	
C3A	20240723	Sunny	15:08	6.93	99.6	8.02	0.06	34.90	2.26	<2.5	
C3A	20240725	Sunny	15:33	7.43	96.9	7.38	0.02	29.20	7.1	7.9	
C3A	20240725	Sunny	15:33	7.42	96.8	7.35	0.02	29.20	7.23	3.4	
C3A	20240727	Fine	10:08	8.63	112.8	7.68	0.04	28.60	3.41	5.8	
C3A	20240727	Fine	10:08	8.61	112.5	7.64	0.04	28.70	3.38	5.8	
C3A	20240730	Cloudy	14:13	8.67	112.6	7.71	0.04	28.10	2.58	6.4	
C3A	20240730	Cloudy	14:13	8.65	111.9	7.62	0.04	28.10	2.7	5.2	

Contract No. DC/2022/02
 Drainage Improvement Works at Yuen Long -
 Sung Shan New Village, Tai Wo, Lin Fa Tei and Ha Che
 Water Quality Monitoring Result



Water Quality Monitoring Location: C6

Location	Date	Weather	Time	DO (mg/L)	Do Saturation (%)	pH	Sal (ppt)	Temp (°C)	Turbidity (NTU)	SS (mg/L)	Remark
C6	20240702	Cloudy	13:57	8.97	118.9	7.86	0.06	30.10	4.29	11.0	
C6	20240702	Cloudy	13:57	8.98	118.9	7.85	0.06	30.00	4.1	11.0	
C6	20240704	Cloudy	13:56	9.15	117.1	7.66	0.06	28.10	2.42	6.2	
C6	20240704	Cloudy	13:56	9.15	117.1	7.65	0.06	28.10	2.33	6.4	
C6	20240706	Cloudy	9:47	6.31	84.7	7.66	0.09	28.60	5.41	2.7	
C6	20240706	Cloudy	9:47	6.14	82.4	7.69	0.09	28.90	5.38	3.2	
C6	20240709	Cloudy	14:02	9.20	117.3	7.64	0.09	28.50	2.51	5.1	
C6	20240709	Cloudy	14:03	9.18	117.1	7.61	0.09	28.60	2.46	4.1	
C6	20240711	Sunny	14:05	7.08	97.0	7.77	0.06	28.30	3.68	4.7	
C6	20240711	Sunny	14:05	6.95	95.3	7.76	0.06	28.30	3.79	5.3	
C6	20240713	Fine	9:28	9.15	118.1	7.66	0.09	28.60	5.41	25.0	
C6	20240713	Fine	9:28	9.14	117.6	7.69	0.09	28.90	5.38	27.0	
C6	20240716	Sunny	14:18	7.72	100.3	7.48	0.08	28.90	6.9	14.0	
C6	20240716	Sunny	14:18	7.71	100.1	7.47	0.08	28.90	7.11	15.0	
C6	20240718	Sunny	14:03	7.33	92.7	7.66	0.06	28.10	2.42	38.0	
C6	20240718	Sunny	14:03	7.40	93.6	7.65	0.06	28.10	2.33	36.0	
C6	20240720	Cloudy	9:38	9.18	117.3	7.63	0.07	28.60	5.51	4.4	
C6	20240720	Cloudy	9:38	9.18	117.5	7.61	0.07	28.50	5.47	5.2	
C6	20240723	Sunny	14:01	7.75	106.5	7.93	0.06	32.20	1.14	6.0	
C6	20240723	Sunny	14:01	7.75	106.5	7.92	0.06	32.20	1.18	7.4	
C6	20240725	Sunny	14:22	6.89	89.9	7.88	0.08	32.50	6.39	2.6	
C6	20240725	Sunny	14:22	6.95	90.7	7.88	0.08	32.50	6.48	3.2	
C6	20240727	Fine	9:03	9.11	117.1	7.59	0.08	28.60	6.41	4.1	
C6	20240727	Fine	9:03	9.12	117.4	7.56	0.08	28.50	6.28	4.7	
C6	20240730	Cloudy	12:59	9.17	117.6	7.63	0.07	27.40	7.31	4.9	
C6	20240730	Cloudy	12:59	9.17	117.3	7.66	0.07	27.40	7.28	6.3	

Contract No. DC/2022/02
 Drainage Improvement Works at Yuen Long -
 Sung Shan New Village, Tai Wo, Lin Fa Tei and Ha Che
 Water Quality Monitoring Result



Water Quality Monitoring Location: C7A

Location	Date	Weather	Time	DO (mg/L)	Do Saturation (%)	pH	Sal (ppt)	Temp (°C)	Turbidity (NTU)	SS (mg/L)	Remark
C7A	20240702	Cloudy	14:21	6.51	86.4	7.45	0.09	30.10	5.67	6.2	
C7A	20240702	Cloudy	14:21	6.48	86.0	7.43	0.09	30.10	5.66	6.2	
C7A	20240704	Cloudy	14:25	4.93	64.8	7.30	0.11	29.50	3.38	6.3	
C7A	20240704	Cloudy	14:25	4.90	64.4	7.30	0.11	29.50	3.25	2.8	
C7A	20240706	Cloudy	10:08	8.43	113.2	7.46	0.11	28.90	3.46	<2.5	
C7A	20240706	Cloudy	10:08	8.11	108.9	7.44	0.11	28.80	3.43	<2.5	
C7A	20240709	Cloudy	14:39	4.84	65.2	7.44	0.16	29.90	3.46	6.3	
C7A	20240709	Cloudy	14:39	4.86	64.9	7.42	0.16	29.80	3.45	6.4	
C7A	20240711	Sunny	14:33	6.67	91.4	7.82	0.12	32.00	3.03	6.0	
C7A	20240711	Sunny	14:33	6.62	90.8	7.81	0.12	32.00	2.94	6.0	
C7A	20240713	Fine	9:47	4.85	64.3	7.46	0.11	29.90	4.46	19.0	
C7A	20240713	Fine	9:47	4.86	64.5	7.44	0.11	29.80	4.43	26.0	
C7A	20240716	Sunny	14:41	7.69	102.5	7.80	0.10	30.40	15.9	28.0	
C7A	20240716	Sunny	14:41	7.68	102.4	7.80	0.10	30.40	15.75	27.0	
C7A	20240718	Sunny	14:21	5.21	65.9	7.30	0.11	29.50	3.38	38.0	
C7A	20240718	Sunny	14:21	5.13	64.9	7.30	0.11	29.50	3.25	37.0	
C7A	20240720	Cloudy	9:59	4.92	65.6	7.46	0.14	29.90	3.45	8.1	
C7A	20240720	Cloudy	9:59	4.93	65.8	7.43	0.14	29.70	3.43	8.2	
C7A	20240723	Sunny	14:26	9.49	131.7	7.95	0.14	32.80	4.61	5.4	
C7A	20240723	Sunny	14:26	9.49	131.8	7.94	0.14	32.80	4.6	8.8	
C7A	20240725	Sunny	14:43	10.62	144.9	8.35	0.12	31.80	5.15	5.2	
C7A	20240725	Sunny	14:43	10.62	145.0	8.35	0.12	31.80	5.12	6.5	
C7A	20240727	Fine	9:28	4.86	65.2	7.38	0.11	29.80	3.41	4.9	
C7A	20240727	Fine	9:28	4.83	64.8	7.36	0.11	29.60	3.38	9.3	
C7A	20240730	Cloudy	13:26	4.91	64.9	7.43	0.13	28.70	8.44	7.5	
C7A	20240730	Cloudy	13:26	4.87	64.8	7.41	0.13	28.60	8.41	9.7	

Contract No. DC/2022/02
 Drainage Improvement Works at Yuen Long -
 Sung Shan New Village, Tai Wo, Lin Fa Tei and Ha Che
 Water Quality Monitoring Result



Water Quality Monitoring Location: C8

Location	Date	Weather	Time	DO (mg/L)	Do Saturation (%)	pH	Sal (ppt)	Temp (°C)	Turbidity (NTU)	SS (mg/L)	Remark
C8	20240702	Cloudy	14:33	7.71	102.3	7.58	0.09	30.20	6.57	6.8	
C8	20240702	Cloudy	14:33	7.71	102.3	7.58	0.09	30.20	6.55	6.5	
C8	20240704	Cloudy	14:38	8.06	106.0	7.50	0.08	29.60	6.18	<2.5	
C8	20240704	Cloudy	14:38	8.05	105.8	7.48	0.08	29.60	6.68	<2.5	
C8	20240706	Cloudy	10:21	7.01	94.1	7.56	0.12	29.90	6.46	<2.5	
C8	20240706	Cloudy	10:21	7.16	96.1	7.53	0.12	29.90	6.43	<2.5	
C8	20240709	Cloudy	14:55	8.06	106.9	7.56	0.12	29.50	6.55	4.7	
C8	20240709	Cloudy	14:55	8.04	106.7	7.54	0.12	29.50	6.58	6.0	
C8	20240711	Sunny	14:46	7.62	103.9	7.58	0.08	31.70	7.45	4.7	
C8	20240711	Sunny	14:47	7.62	103.8	7.55	0.08	31.70	7.3	5.2	
C8	20240713	Fine	10:03	8.05	107.1	7.56	0.12	30.30	6.46	8.8	
C8	20240713	Fine	10:03	8.04	106.8	7.53	0.12	30.20	6.43	8.8	
C8	20240716	Sunny	14:54	7.78	103.4	7.63	0.08	30.30	6.79	14.0	
C8	20240716	Sunny	14:54	7.77	103.3	7.62	0.08	30.30	7.04	15.0	
C8	20240718	Sunny	14:35	6.12	77.4	7.26	0.10	27.50	7.21	17.0	
C8	20240718	Sunny	14:35	6.10	77.2	7.25	0.10	27.50	6.64	21.0	
C8	20240720	Cloudy	10:11	8.06	106.9	7.58	0.13	30.30	6.55	<2.5	
C8	20240720	Cloudy	10:11	8.08	107.3	7.57	0.13	30.20	6.53	<2.5	
C8	20240723	Sunny	14:37	6.82	93.4	7.52	0.10	32.00	6.83	2.8	
C8	20240723	Sunny	14:37	6.82	93.4	7.52	0.10	32.00	6.74	5.6	
C8	20240725	Sunny	14:56	7.55	101.8	7.61	0.09	31.10	9.25	<2.5	
C8	20240725	Sunny	14:57	7.55	101.9	7.58	0.09	31.10	8.8	<2.5	
C8	20240727	Fine	9:41	7.98	106.9	7.52	0.10	30.30	6.4	<2.5	
C8	20240727	Fine	9:41	7.95	106.4	7.48	0.10	30.10	6.28	<2.5	
C8	20240730	Cloudy	13:38	8.01	106.6	7.53	0.11	28.10	6.5	<2.5	
C8	20240730	Cloudy	13:38	8.03	106.7	7.51	0.11	28.10	6.56	<2.5	

Contract No. DC/2022/02
 Drainage Improvement Works at Yuen Long -
 Sung Shan New Village, Tai Wo, Lin Fa Tei and Ha Che
 Water Quality Monitoring Result



Water Quality Monitoring Location: C9

Location	Date	Weather	Time	DO (mg/L)	Do Saturation (%)	pH	Sal (ppt)	Temp (°C)	Turbidity (NTU)	SS (mg/L)	Remark
C9	20240702	Cloudy	13:11	9.05	113.5	7.62	0.06	27.00	8.5	20.0	
C9	20240702	Cloudy	13:11	9.04	113.5	7.61	0.06	27.00	8.44	21.0	
C9	20240704	Cloudy	13:11	9.19	114.8	7.70	0.06	26.70	4.81	<2.5	
C9	20240704	Cloudy	13:11	9.18	114.7	7.68	0.06	26.70	4.72	<2.5	
C9	20240706	Cloudy	8:53	9.33	125.2	7.67	0.08	27.10	4.91	4.8	
C9	20240706	Cloudy	8:53	9.21	123.6	7.65	0.08	27.10	4.88	4.0	
C9	20240709	Cloudy	13:22	9.20	115.3	7.69	0.10	26.70	4.91	<2.5	
C9	20240709	Cloudy	13:22	9.14	114.6	7.65	0.10	26.90	4.8	3.0	
C9	20240711	Sunny	13:21	8.92	112.6	8.25	0.08	27.30	6.17	19.0	
C9	20240711	Sunny	13:21	8.92	112.6	8.25	0.08	27.30	6.18	20.0	
C9	20240713	Fine	8:40	9.13	114.5	7.67	0.08	62.70	4.91	23.0	
C9	20240713	Fine	8:40	9.16	114.8	7.65	0.08	62.80	4.88	24.0	
C9	20240716	Sunny	13:20	8.92	112.3	7.59	0.06	27.10	6.47	10.9	
C9	20240716	Sunny	13:20	8.92	112.3	7.59	0.06	27.10	6.41	7.3	
C9	20240718	Sunny	13:13	8.16	100.7	7.76	0.06	26.00	3.57	15.0	
C9	20240718	Sunny	13:13	8.16	100.6	7.75	0.06	26.00	3.66	15.0	
C9	20240720	Cloudy	8:52	9.18	114.4	7.63	0.08	27.10	4.89	6.1	
C9	20240720	Cloudy	8:52	9.20	114.8	7.65	0.08	26.80	4.84	4.9	
C9	20240723	Sunny	13:08	8.02	100.1	7.60	0.06	26.70	2.18	<2.5	
C9	20240723	Sunny	13:08	8.02	100.1	7.59	0.06	26.60	2.17	<2.5	
C9	20240725	Sunny	13:22	7.53	101.5	7.80	0.05	27.90	4	9.2	
C9	20240725	Sunny	13:22	7.48	100.8	7.81	0.05	27.90	3.95	9.3	
C9	20240727	Fine	8:23	9.16	114.5	7.61	0.08	29.50	4.86	3.9	
C9	20240727	Fine	8:23	9.13	114.2	7.58	0.08	29.80	4.82	8.8	
C9	20240730	Cloudy	12:13	9.15	114.9	7.66	0.09	26.90	4.88	7.2	
C9	20240730	Cloudy	12:13	9.19	115.1	7.63	0.09	26.60	4.76	6.4	

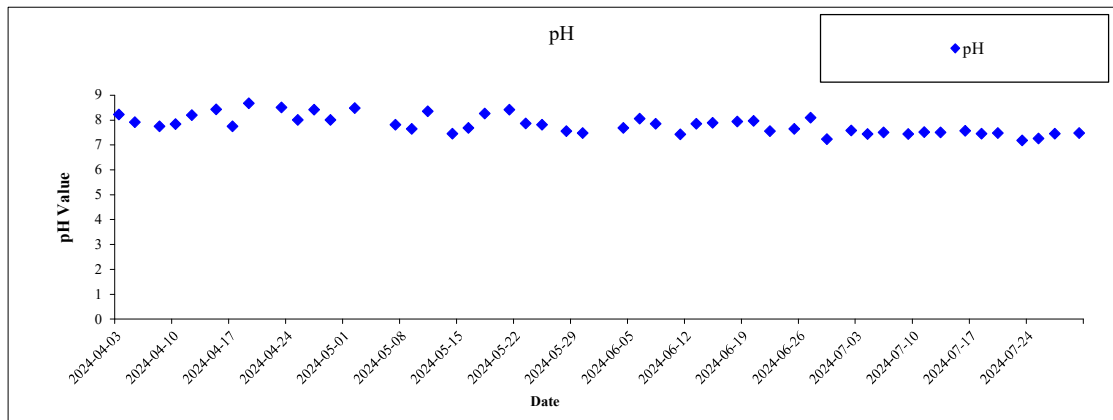
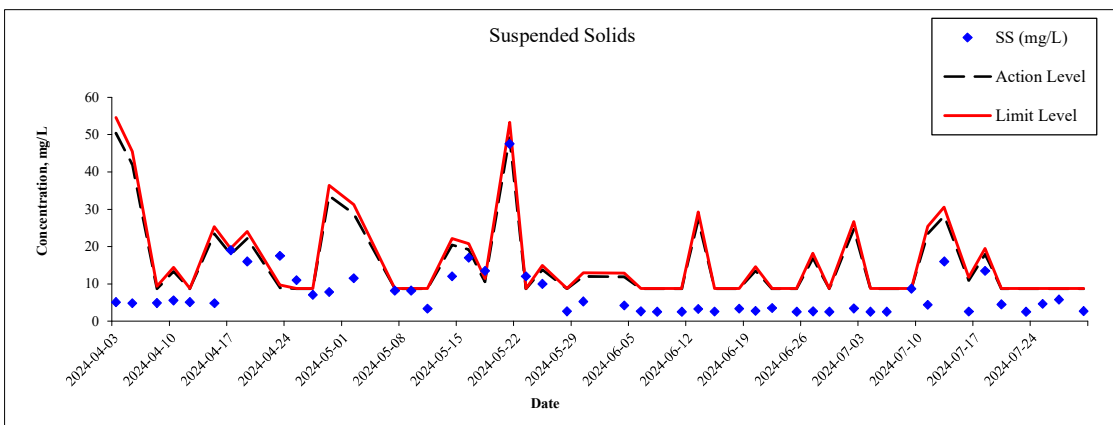
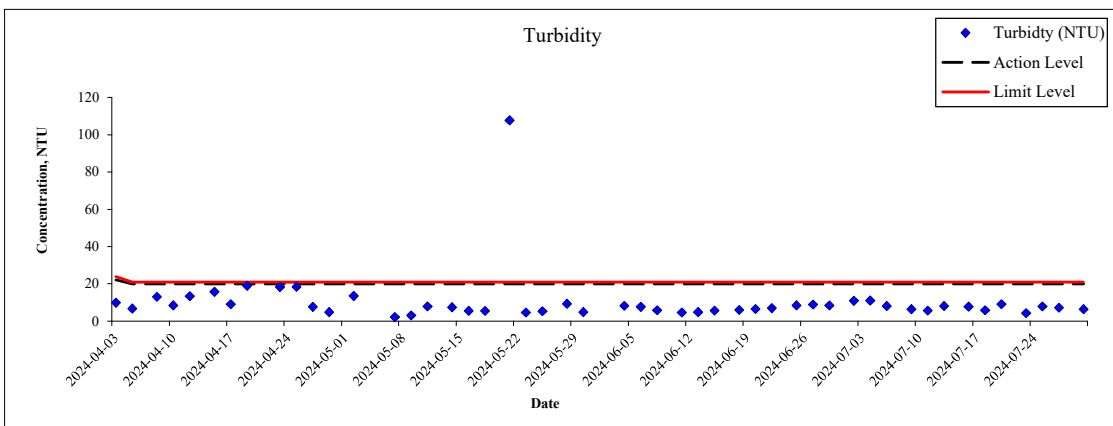
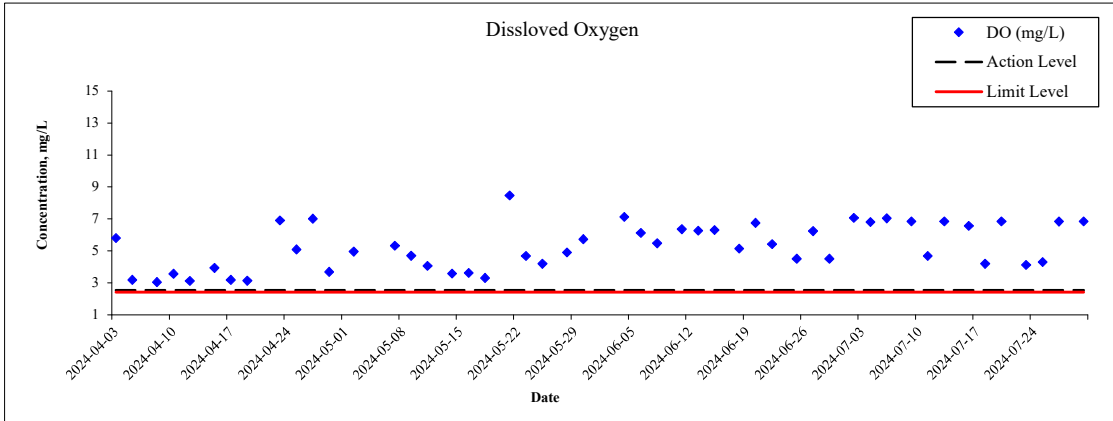
Contract No. DC/2022/02
 Drainage Improvement Works at Yuen Long -
 Sung Shan New Village, Tai Wo, Lin Fa Tei and Ha Che
 Water Quality Monitoring Result



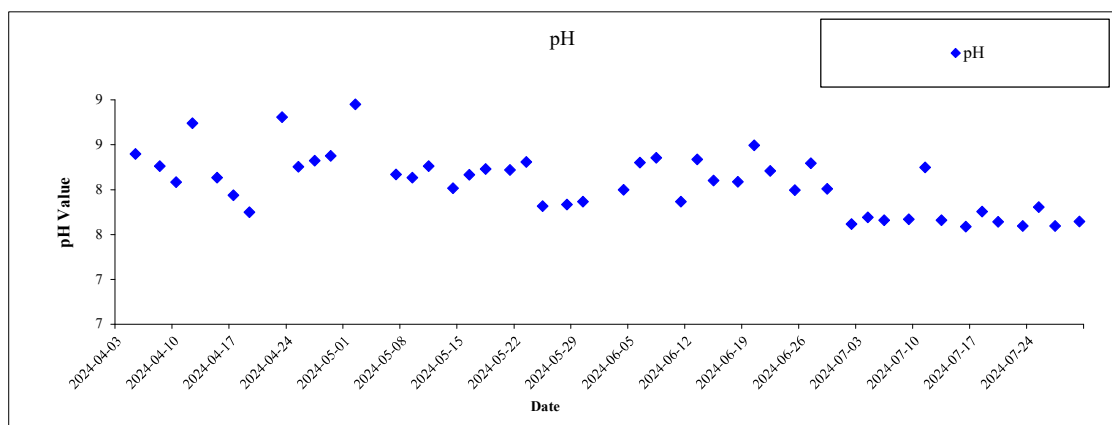
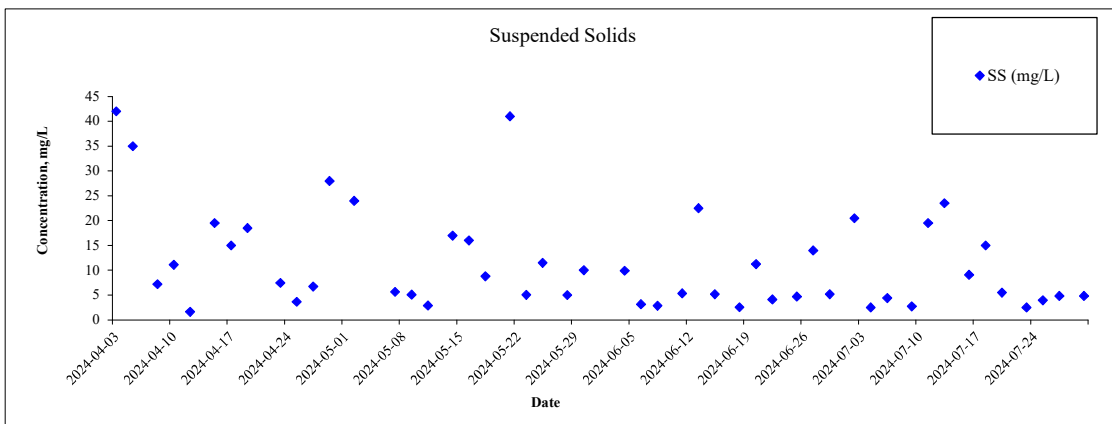
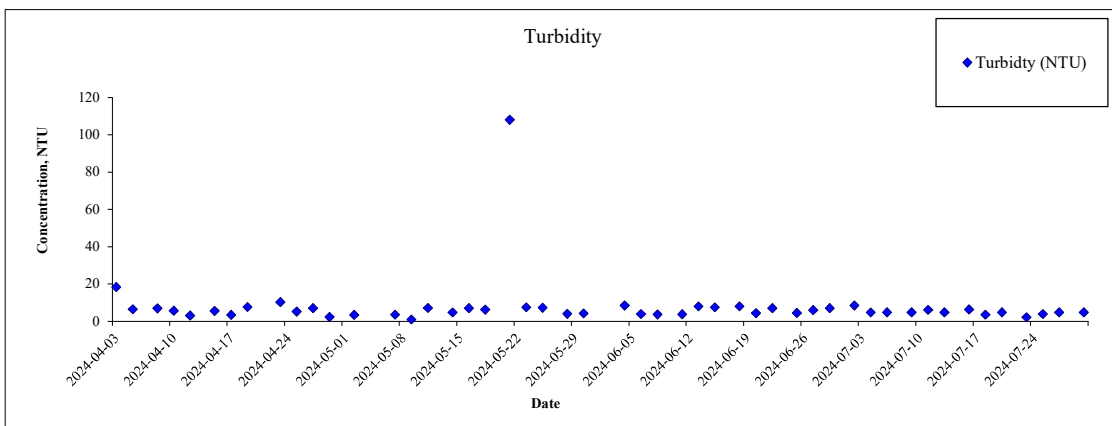
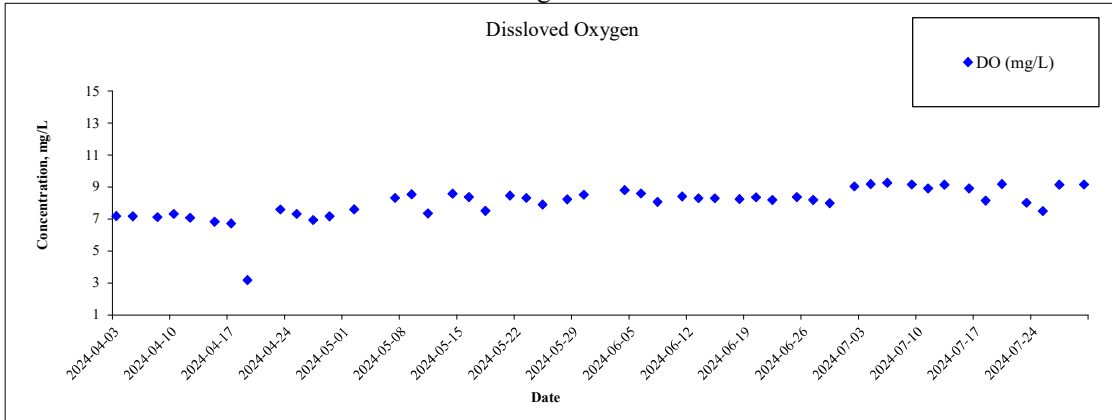
Water Quality Monitoring Location: C10

Location	Date	Weather	Time	DO (mg/L)	Do Saturation (%)	pH	Sal (ppt)	Temp (°C)	Turbidity (NTU)	SS (mg/L)	Remark
C10	20240702	Cloudy	13:24	7.10	91.9	7.59	0.07	28.80	11.85	3.9	
C10	20240702	Cloudy	13:24	7.04	91.2	7.56	0.07	28.80	10.17	2.9	
C10	20240704	Cloudy	13:22	6.84	87.5	7.44	0.06	28.10	11.31	<2.5	
C10	20240704	Cloudy	13:22	6.77	86.7	7.43	0.06	28.10	10.73	<2.5	
C10	20240706	Cloudy	9:06	6.99	93.8	7.51	0.07	28.10	8.31	<2.5	
C10	20240706	Cloudy	9:06	7.08	95	7.49	0.07	28.10	7.92	<2.5	
C10	20240709	Cloudy	13:34	6.86	87.3	7.42	0.09	28.30	6.5	8.5	
C10	20240709	Cloudy	13:34	6.83	87.5	7.46	0.09	28.20	6.32	8.9	
C10	20240711	Sunny	13:34	4.68	61.8	7.52	0.08	29.90	5.7	4.1	
C10	20240711	Sunny	13:34	4.68	61.8	7.51	0.08	29.90	5.72	4.7	
C10	20240713	Fine	8:53	6.84	86.9	7.51	0.07	28.10	8.31	15.0	
C10	20240713	Fine	8:53	6.86	87.3	7.49	0.07	27.90	7.92	17.0	
C10	20240716	Sunny	13:33	6.59	85.3	7.58	0.08	28.80	7.51	2.6	
C10	20240716	Sunny	13:33	6.55	84.9	7.56	0.08	28.80	8.07	<2.5	
C10	20240718	Sunny	13:24	4.20	53.0	7.45	0.08	27.30	5.96	14.0	
C10	20240718	Sunny	13:24	4.19	52.9	7.44	0.08	27.30	5.73	13.0	
C10	20240720	Cloudy	9:03	6.84	87.2	7.49	0.09	27.80	9.18	3.2	
C10	20240720	Cloudy	9:03	6.85	87.4	7.47	0.09	27.60	9.05	5.8	
C10	20240723	Sunny	13:26	4.13	53.7	7.19	0.08	28.90	4.18	<2.5	
C10	20240723	Sunny	13:26	4.12	53.5	7.18	0.08	28.90	4.46	<2.5	
C10	20240725	Sunny	13:43	4.31	56.6	7.26	0.08	29.50	7.93	4.6	
C10	20240725	Sunny	13:43	4.30	56.5	7.26	0.08	29.50	7.87	4.6	
C10	20240727	Fine	8:34	6.83	87.2	7.46	0.07	27.60	7.26	5.7	
C10	20240727	Fine	8:34	6.85	87.4	7.43	0.07	27.80	7.19	5.8	
C10	20240730	Cloudy	12:25	6.88	87.6	7.48	0.08	27.90	6.33	2.9	
C10	20240730	Cloudy	12:25	6.81	87.1	7.46	0.08	27.70	6.41	<2.5	

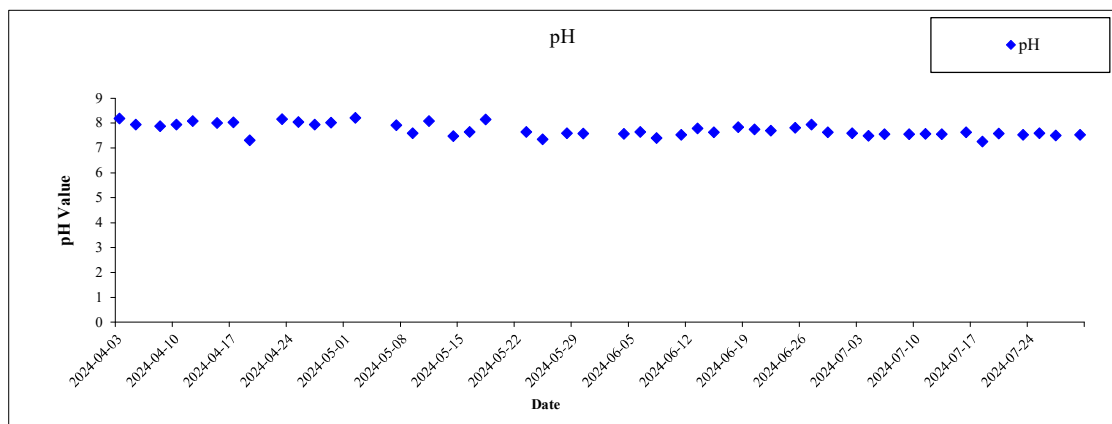
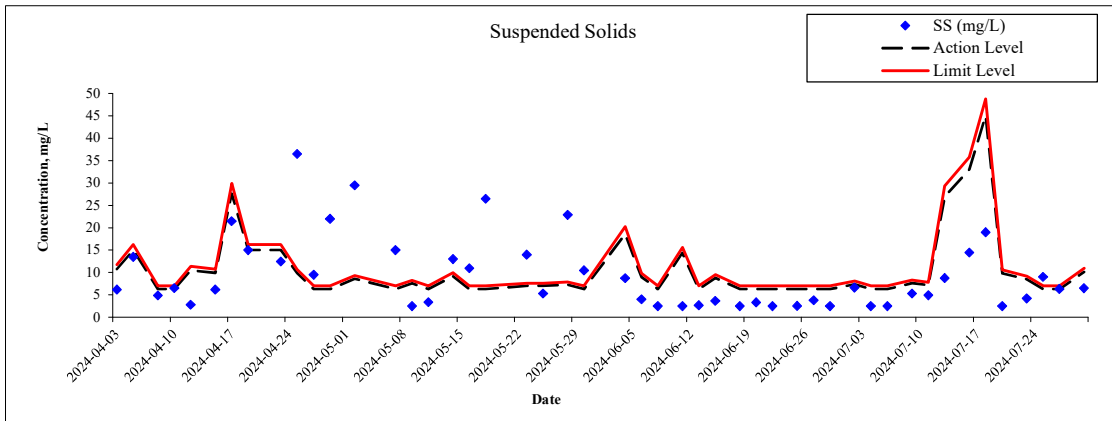
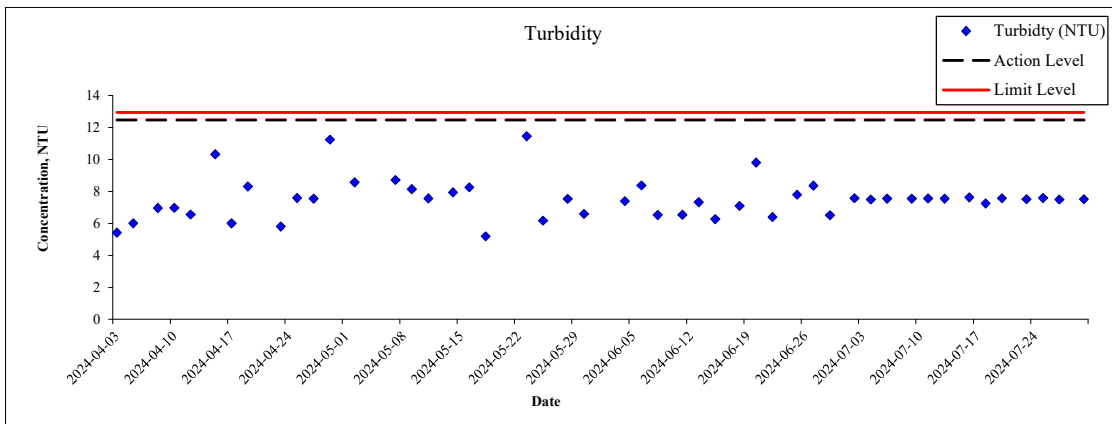
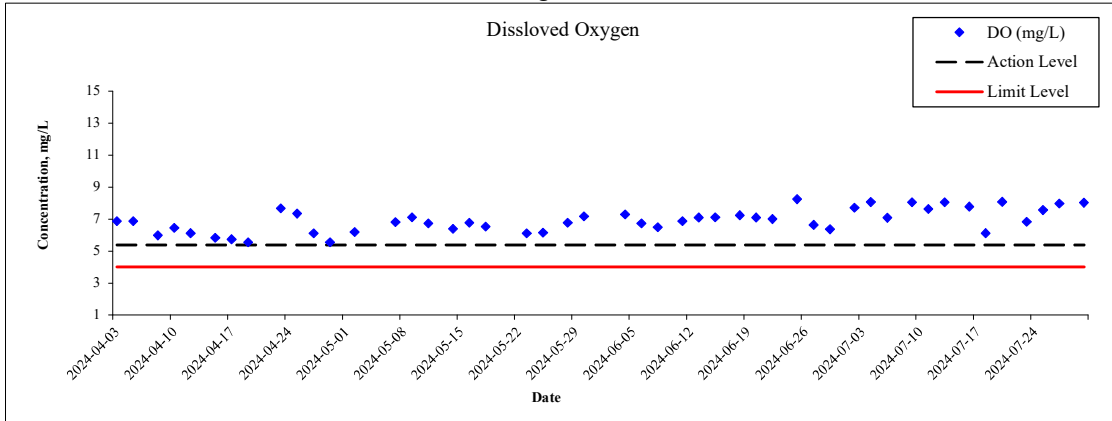
Monitoring Location: C10



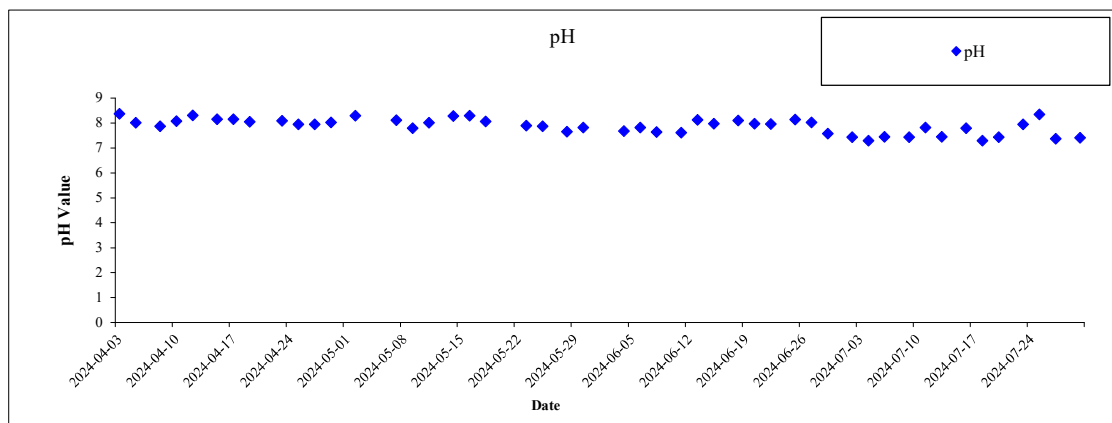
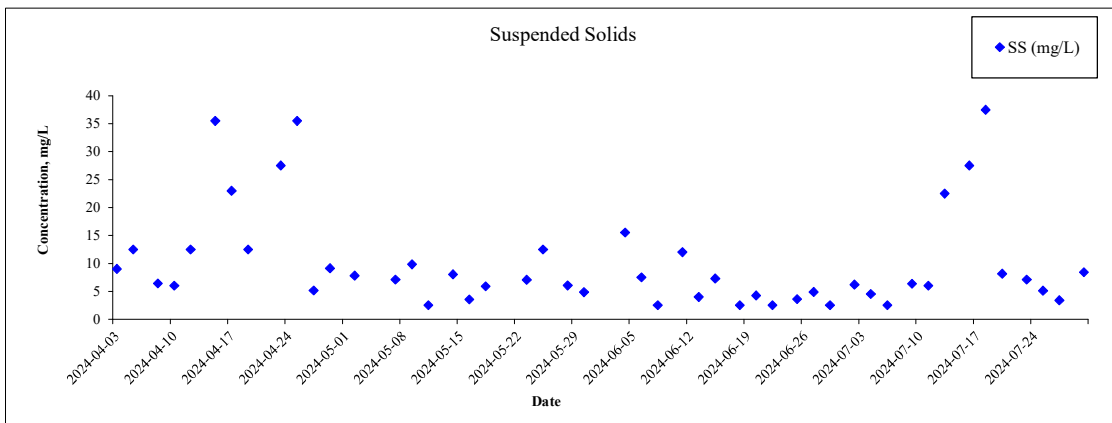
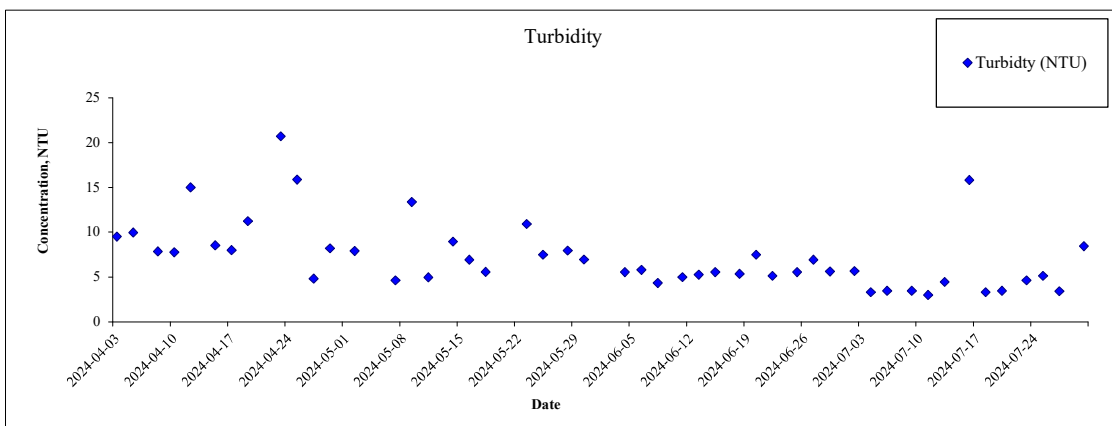
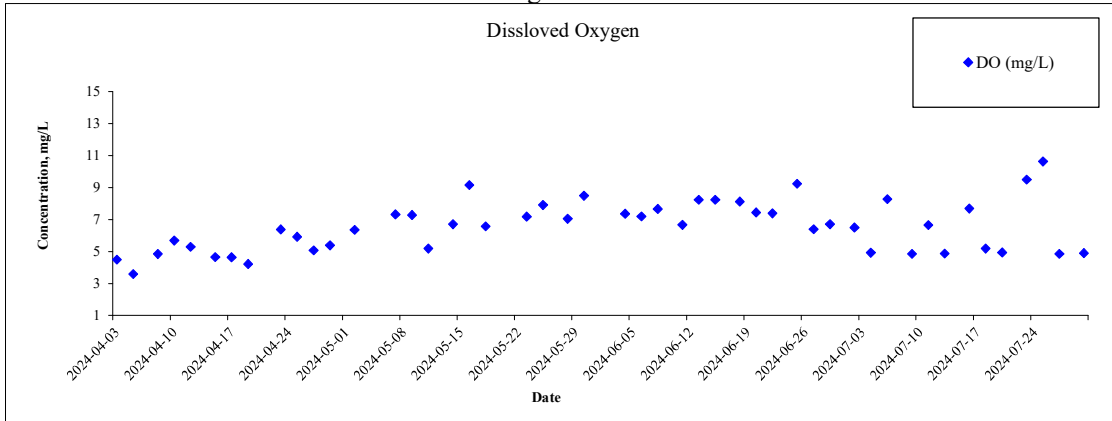
Monitoring Location: C9



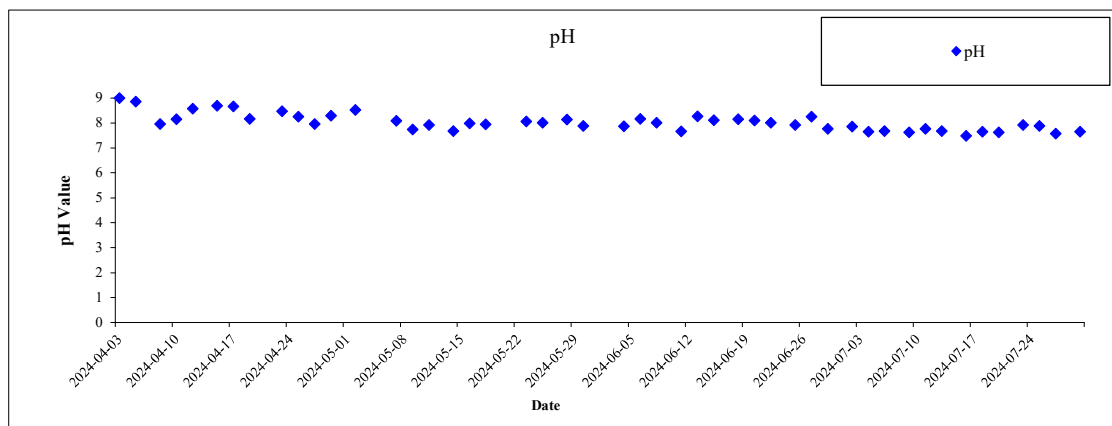
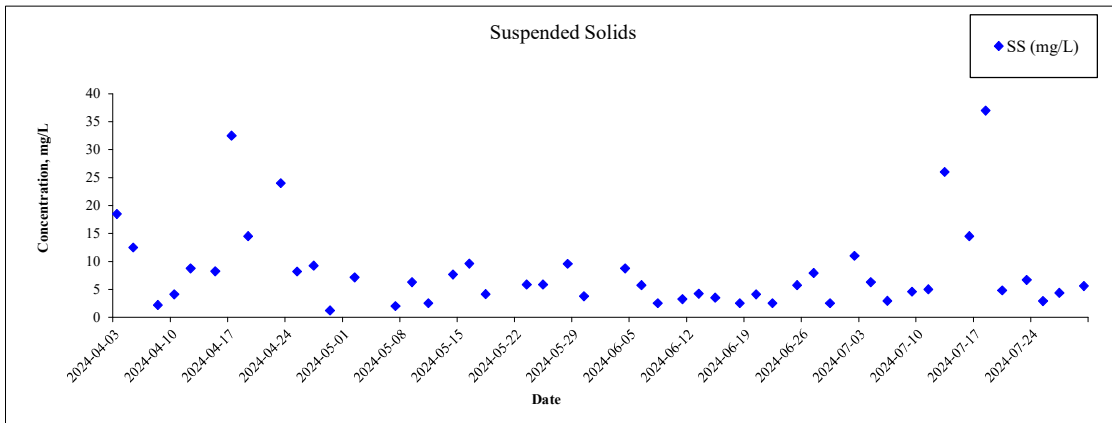
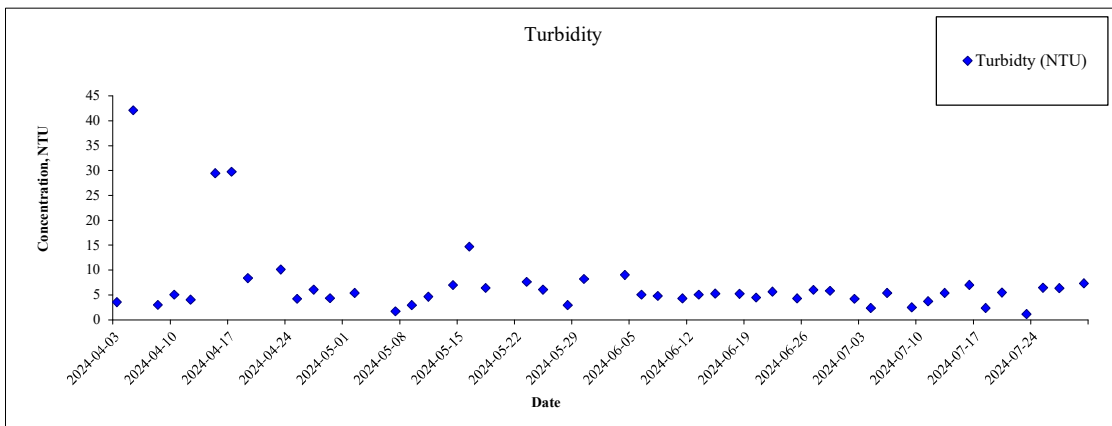
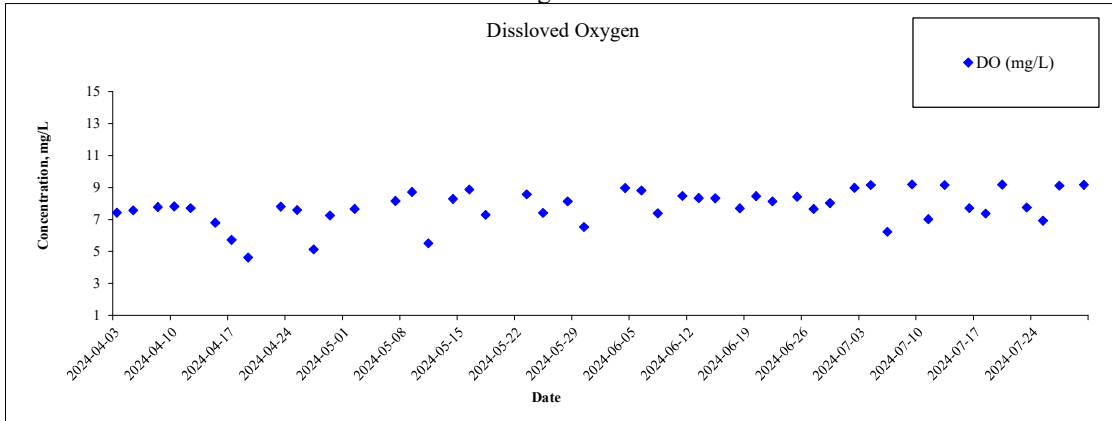
Monitoring Location: C8



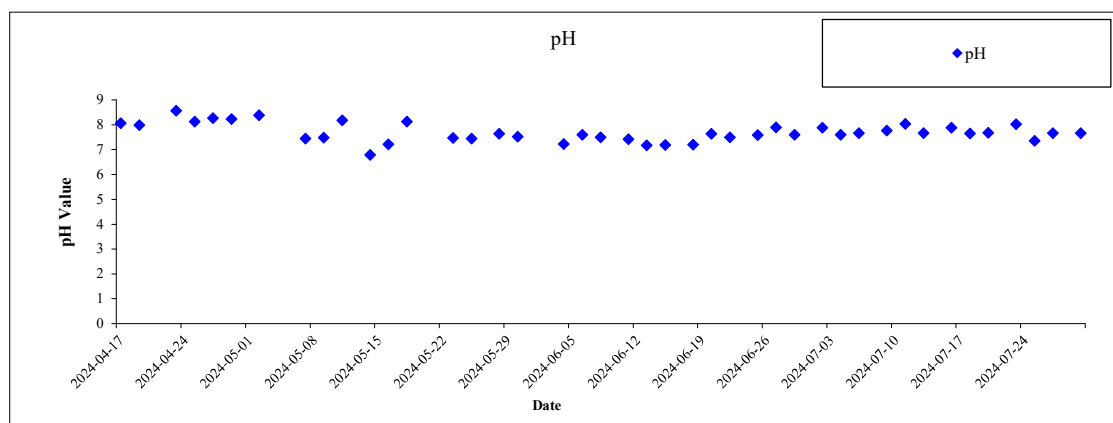
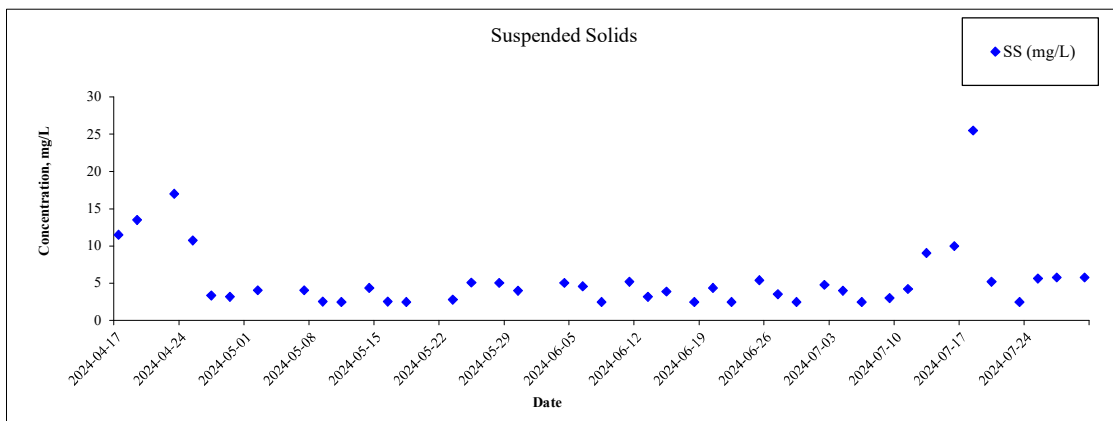
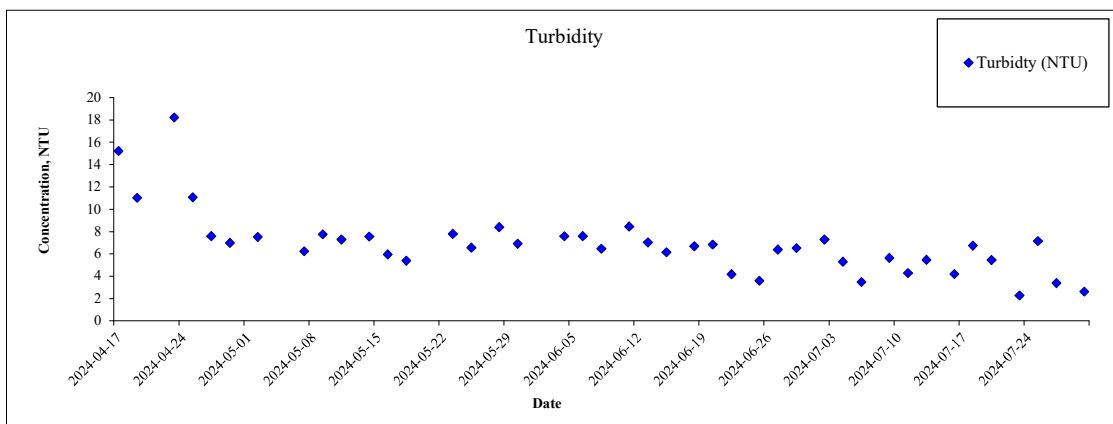
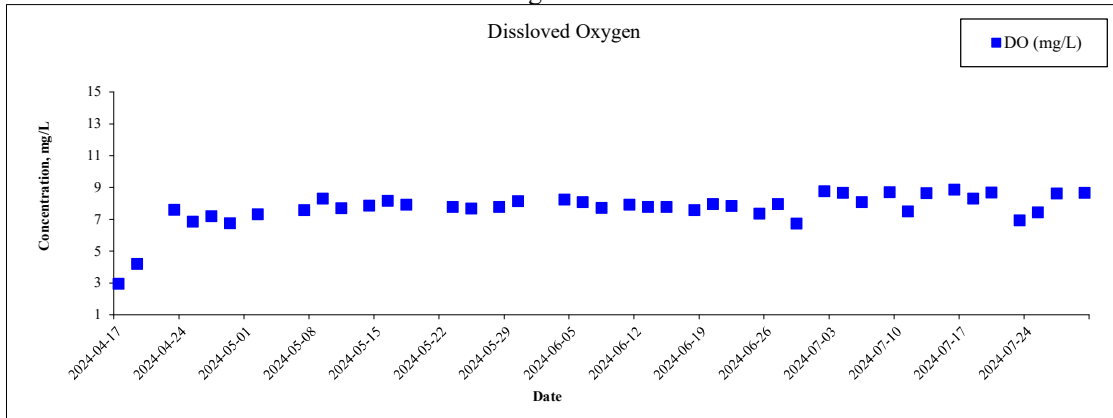
Monitoring Location: C7A



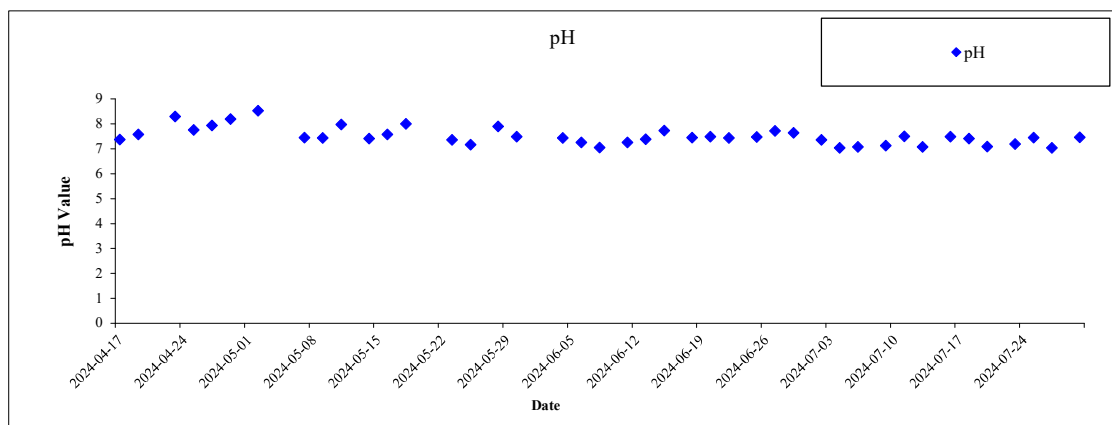
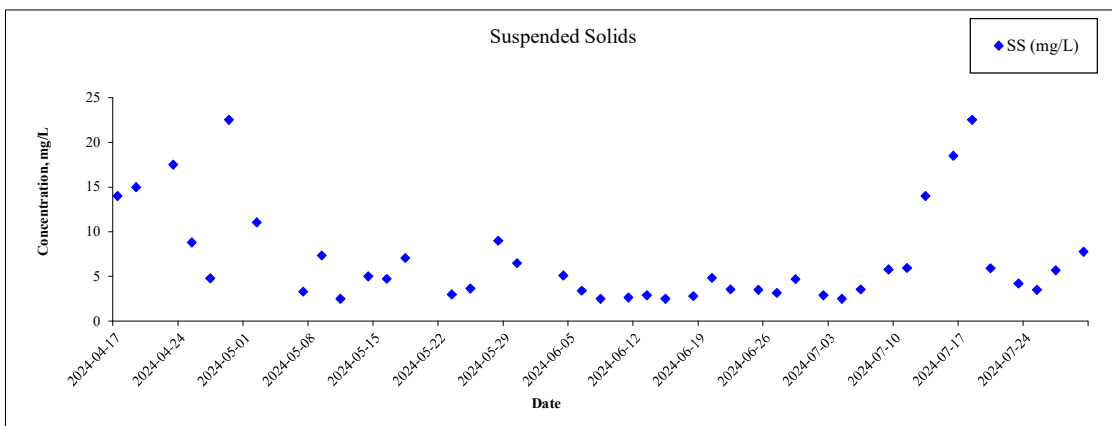
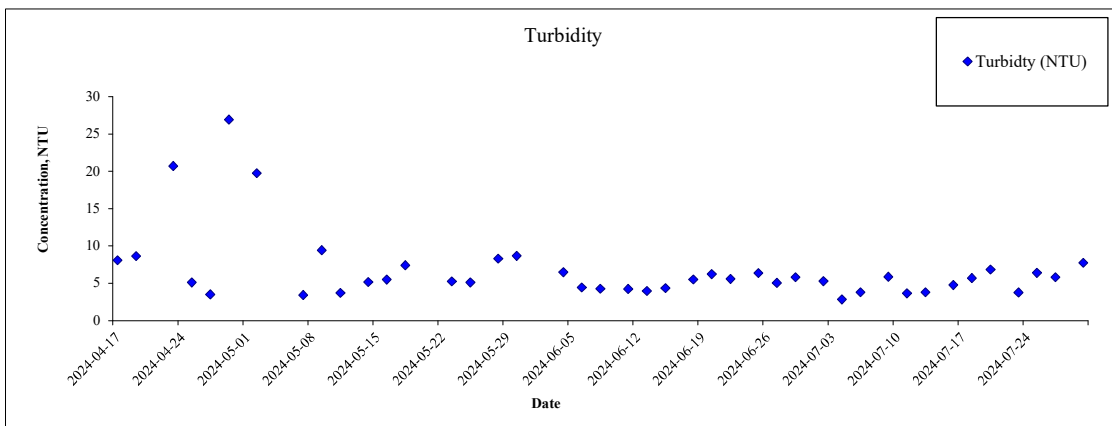
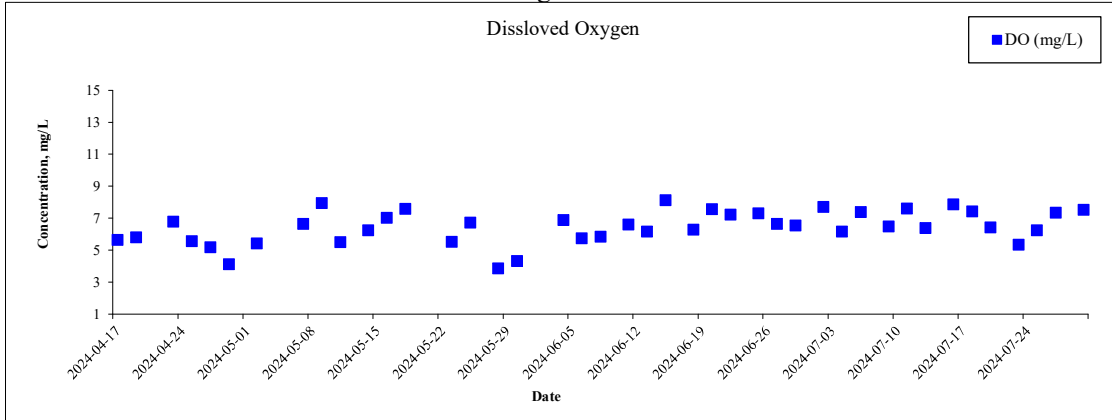
Monitoring Location: C6



Monitoring Location: C3A



Monitoring Location: C2



Monitoring Location: C1A

